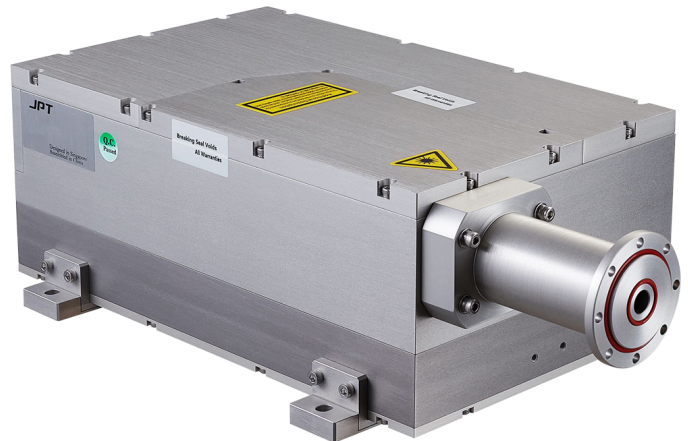


DPSS LASER

# GR-20-W-AIO

en | Data sheet | 1.2.1

- Compact all-in-one design
- Brilliant optical characteristics
- Strong response on various materials
- Outstanding cost-effectiveness



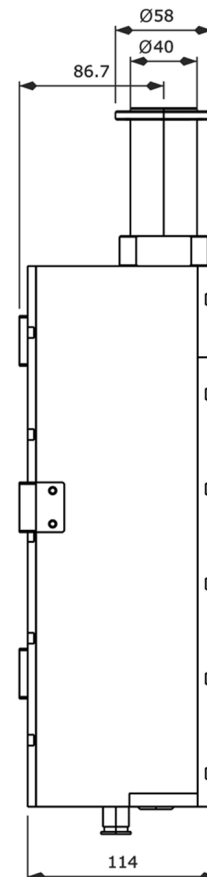
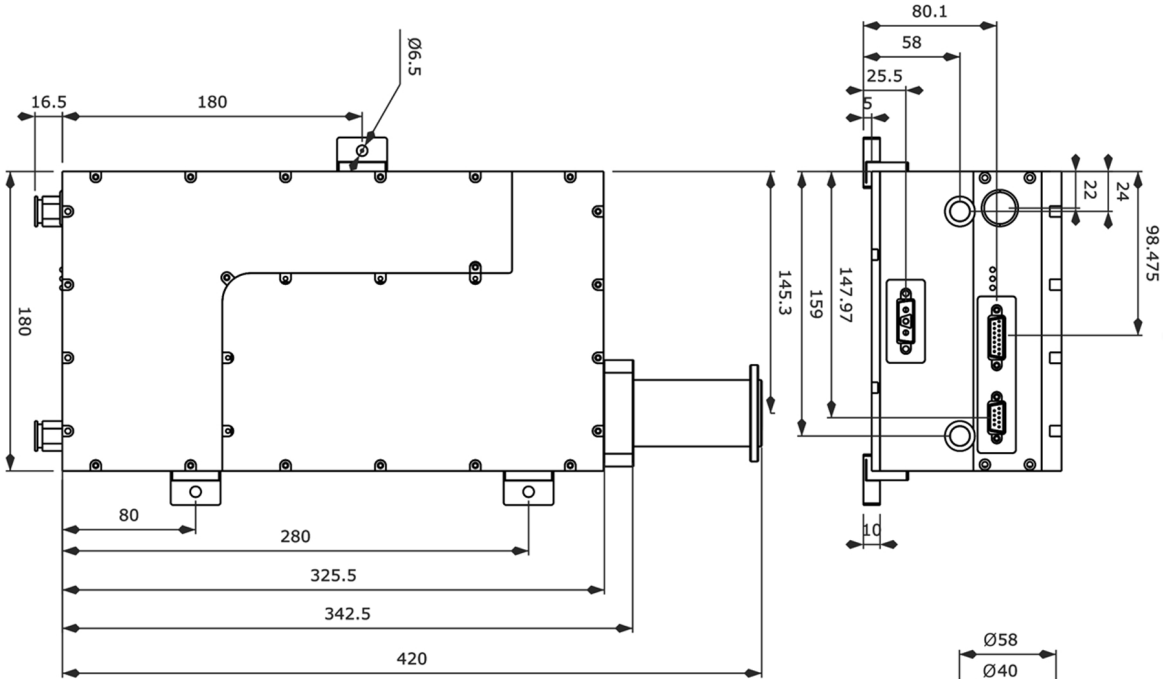
Wavelength	532 nm
Nominal output power	20 W @ 80 kHz
Laser operation mode	Pulsed
Beam quality ( $\leq$ )	1.2 M <sup>2</sup>
Pulse frequency	20 – 200 kHz
Max. peak pulse power	30 kW
Pulse width	20 ns @ 80 kHz
Max. pulse energy	250 $\mu$ J @ 80 kHz
Power instability $\emptyset$	3%
Polarization	Horizontal
Beam diameter D4 $\sigma$	0.8 mm

Cooling method	Water
Cooling flowrate	16 l/min
Cooling power	0.5 kW
Supply voltage DC	36 V
Current consumption	9.7 A
Power consumption @ 20°C	350 W
Operation temperature	10 – 35 °C
Storage temperature	-15 – 50 °C
Mechanical dimensions (W x D x H)	180 x 302 x 114 mm
Net weight	8.7 kg

Product customizations are possible on request.

Information is subject to change without notice. Product photos are non-binding and may show customized features.





Units: mm  
Tolerance:  
x ± 1.0 mm  
x.x ± 0.2 mm

**JPT**

Manufacturer

DPSS laser

GR-20-W-AIO

Dimensions are given in millimeters and are intended as reference values.  
Binding information is available on request.

