

F - T H E T A L E N S

f-100T-10-1030-1080

en | Data sheet | 1.1

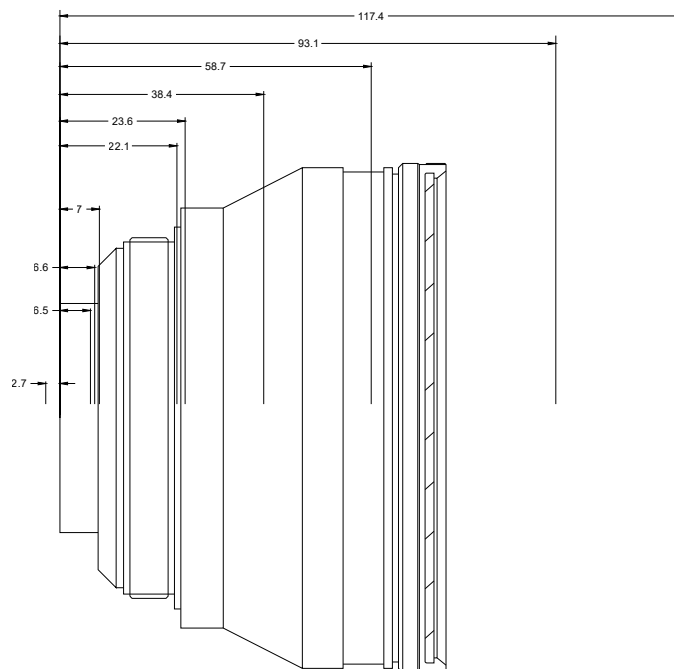
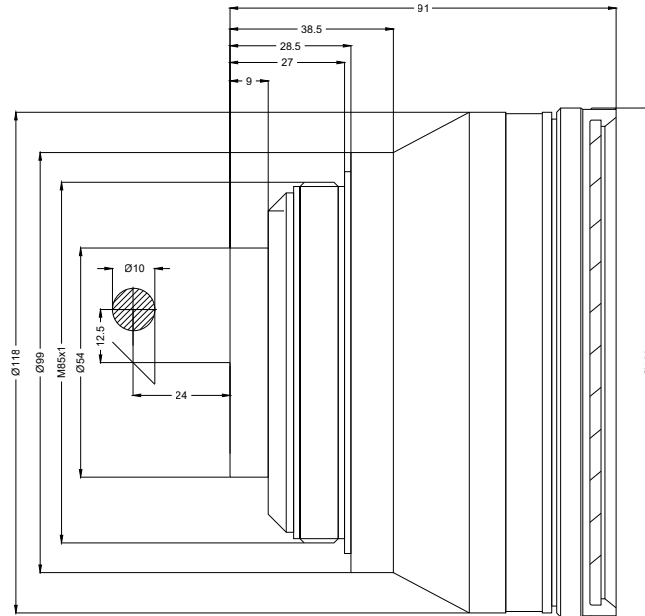
- Telecentric fused silica lens
- Wavelength 1030 – 1080 nm
- Nominal focal length 100 mm
- Max. input beam diameter 10 mm
- Maximum working area 54 x 54 mm



Wavelength	1030 – 1080 nm	Mirror distance m1/m2	12.5 / 24 mm
Nominal focal length	100 mm	Anti-reflective coating	Standard
Effective focal length	100.000 mm	Telecentric error	0.59 °
Flange focal length	206.726 mm	Cooling method	Air
Max. input beam diameter	10 mm	Lens material	Fused silica
Working distance	142.726 mm	Mounting thread	M85x1
Max. scan field	54 x 54 mm	Lens diameter	120 mm
Minimum spot size	19.47 µm		

Information is subject to change without notice.
Product photos are non-binding and may show customized features.





F-Theta lens

f-100T-10-1030-1080

Dimensions are given in millimeters and are intended as reference values.
Binding information is available on request.

