

F - T H E T A L E N S

f-167T-20-1030-1080-v2

en | Data sheet | 1.0

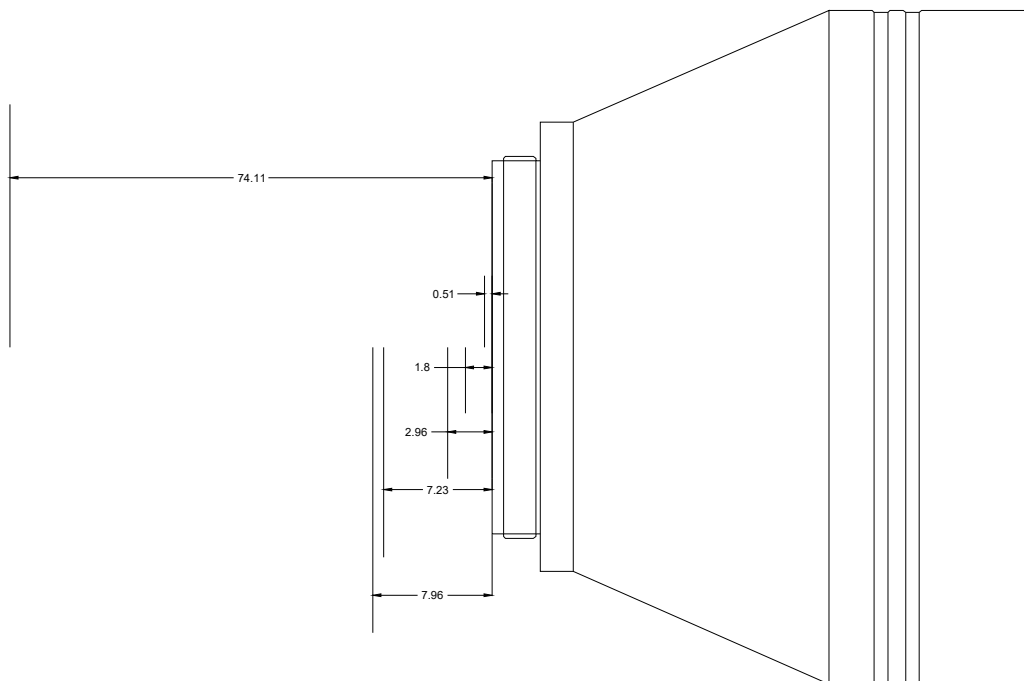
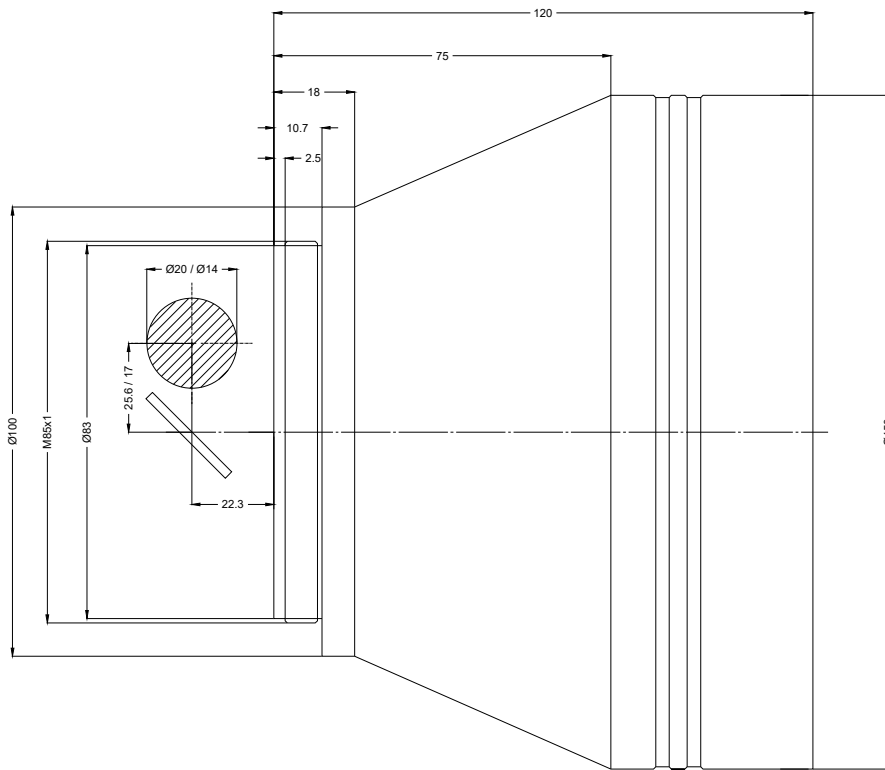
- Telecentric fused silica lens
- Wavelength 1030 – 1080 nm
- Nominal focal length 167 mm
- Max. input beam diameter 20 mm
- Maximum working area 90 x 90 mm



Wavelength	1030 – 1080 nm	Mirror distance m1/m2	25.6 / 22.3 mm
Nominal focal length	167 mm	Anti-reflective coating	Standard
Effective focal length	167.000 mm	Telecentric error	3.9 °
Flange focal length	336.250 mm	Cooling method	Air
Max. input beam diameter	20 mm	Lens material	Fused silica
Working distance	226.950 mm	Mounting thread	M85x1
Max. scan field	90 x 90 mm	Lens diameter	150 mm
Minimum spot size	8.6 µm		

Information is subject to change without notice.
Product photos are non-binding and may show customized features.





F-Theta lens

f-167T-20-1030-1080-v2

Dimensions are given in millimeters and are intended as reference values.
Binding information is available on request.

