

F - T H E T A L E N S

f-200T-14-1030-1080

en | Data sheet | 1.1

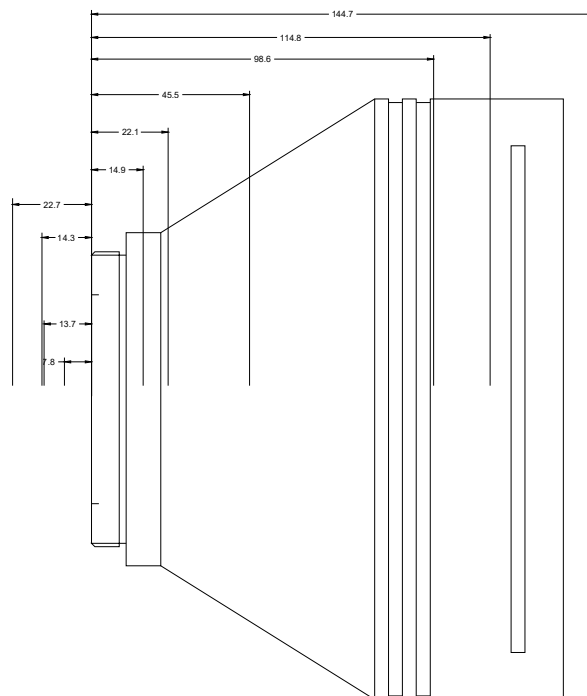
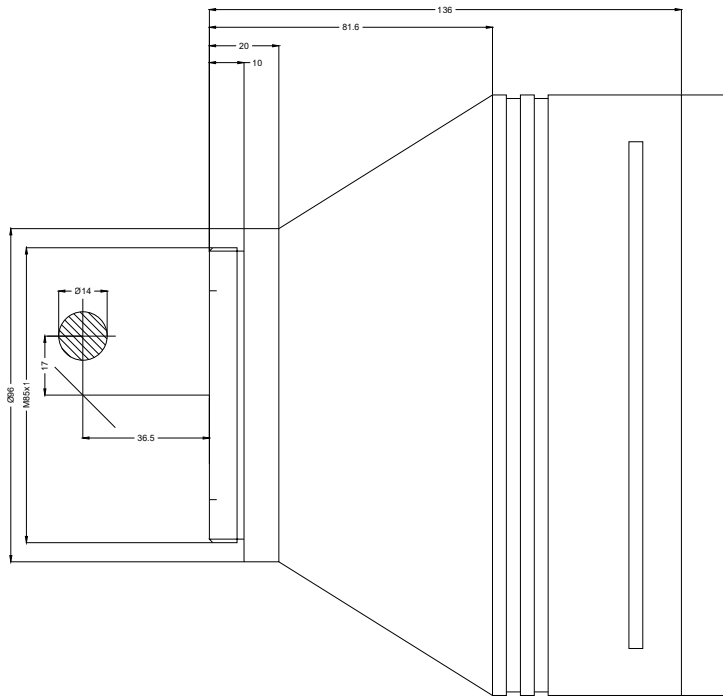
- Telecentric fused silica lens
- Wavelength 1030 – 1080 nm
- Nominal focal length 200 mm
- Max. input beam diameter 14 mm
- Maximum working area 100 x 100 mm



Wavelength	1030 – 1080 nm	Mirror distance m1/m2	17 / 36.445 mm
Nominal focal length	200 mm	Anti-reflective coating	Standard
Effective focal length	204.702 mm	Telecentric error	2 °
Flange focal length	422.954 mm	Cooling method	Air
Max. input beam diameter	14 mm	Lens material	Fused silica
Working distance	296.954 mm	Mounting thread	M85x1
Max. scan field	100 x 100 mm	Lens diameter	173 mm
Minimum spot size	27.82 µm		

Information is subject to change without notice.
Product photos are non-binding and may show customized features.





F-Theta lens

f-200T-14-1030-1080

Dimensions are given in millimeters and are intended as reference values.
Binding information is available on request.

