

F - T H E T A L E N S

# f-32T-10-1030-1080

en | Data sheet | 1.0

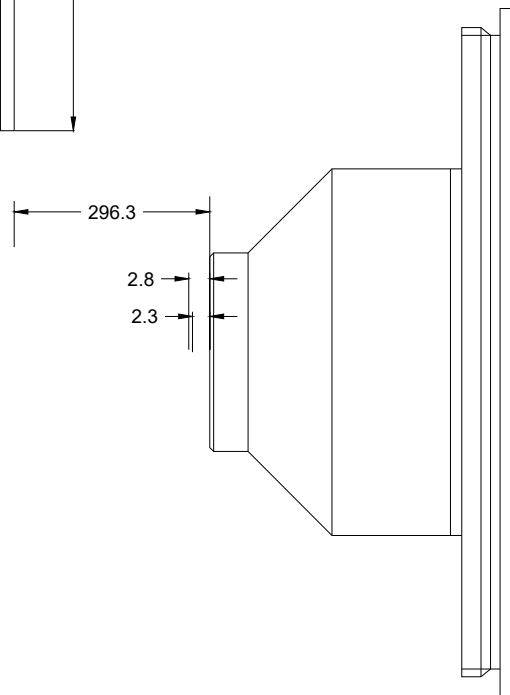
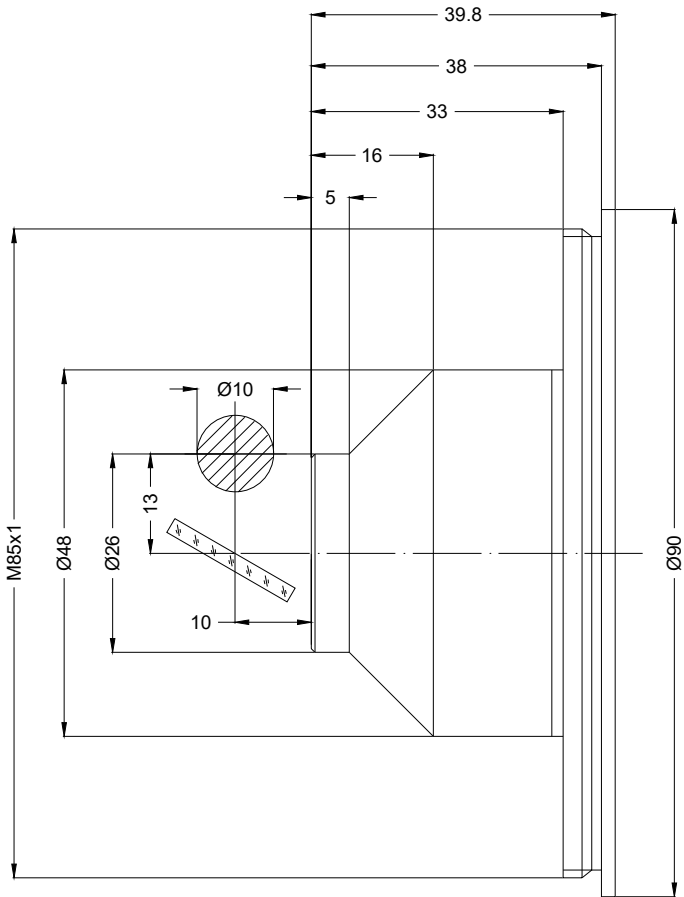
- Telecentric fused silica lens
- Wavelength 1030 – 1080 nm
- Nominal focal length 32 mm
- Max. input beam diameter 10 mm
- Maximum working area 6 x 6 mm



Wavelength	1030 – 1080 nm	Mirror distance m1/m2	13 / 10 mm
Nominal focal length	32 mm	Anti-reflective coating	Standard
Effective focal length	36.140 mm	Telecentric error	1.4 °
Flange focal length	33.590 mm	Cooling method	Air
Max. input beam diameter	10 mm	Lens material	Fused silica
Working distance	31.790 mm	Mounting thread	M85x1
Max. scan field	6 x 6 mm	Lens diameter	90 mm
Minimum spot size	6.2 µm		

Information is subject to change without notice.  
Product photos are non-binding and may show customized features.





F-Theta lens

f-32T-10-1030-1080

Dimensions are given in millimeters and are intended as reference values.  
Binding information is available on request.

