

F - T H E T A L E N S

f-163T-10-1064

en | Data sheet | 1.1

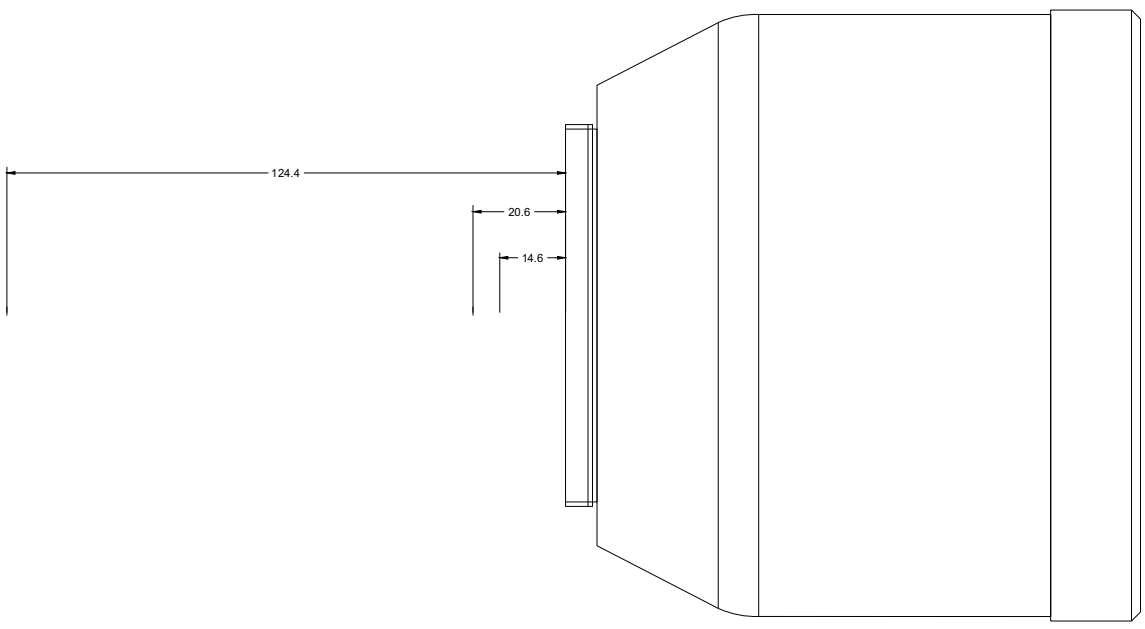
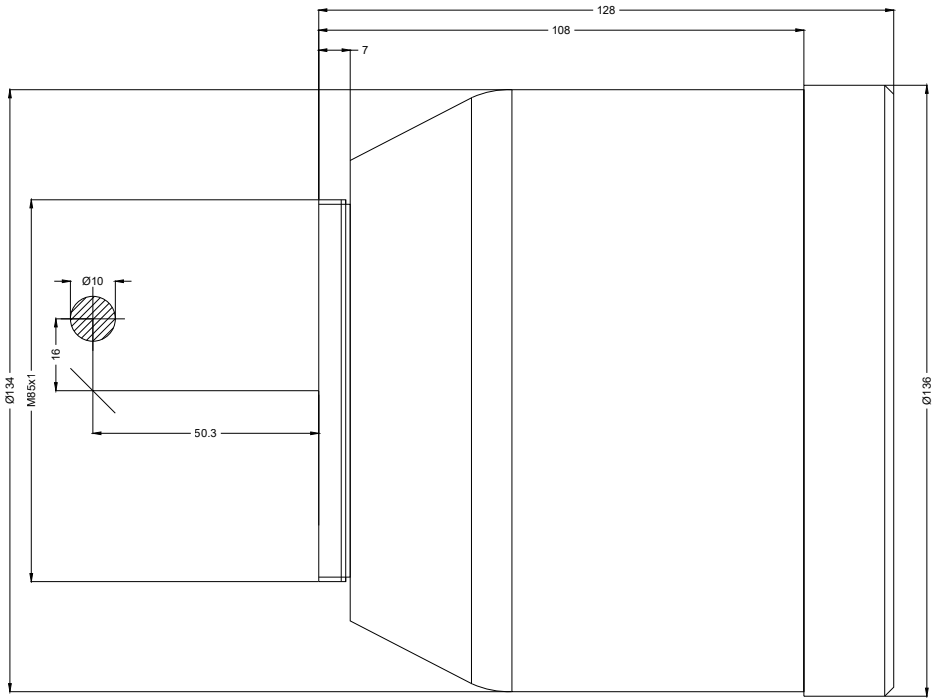
- Telecentric F-Theta Lens, 1064 nm
- Nominal focal length 163 mm
- Max. input beam diameter 10 mm
- Maximum working area 75 x 75 mm



Wavelength	1064 nm	Mirror distance m1/m2	16 / 50.3 mm
Nominal focal length	163 mm	Anti-reflective coating	Standard
Effective focal length	163.000 mm	Telecentric error	0.9 °
Flange focal length	314.642 mm	Cooling method	Air
Max. input beam diameter	10 mm	Lens material	Optical glass
Working distance	193.642 mm	Mounting thread	M85x1
Max. scan field	75 x 75 mm	Lens diameter	136 mm
Minimum spot size	31.74 µm		

Information is subject to change without notice.
Product photos are non-binding and may show customized features.





F-Theta lens

f-163T-10-1064

Dimensions are given in millimeters and are intended as reference values.
Binding information is available on request.

