

F - T H E T A L E N S

# f-50T-10-1940

en | Data sheet | 1.0

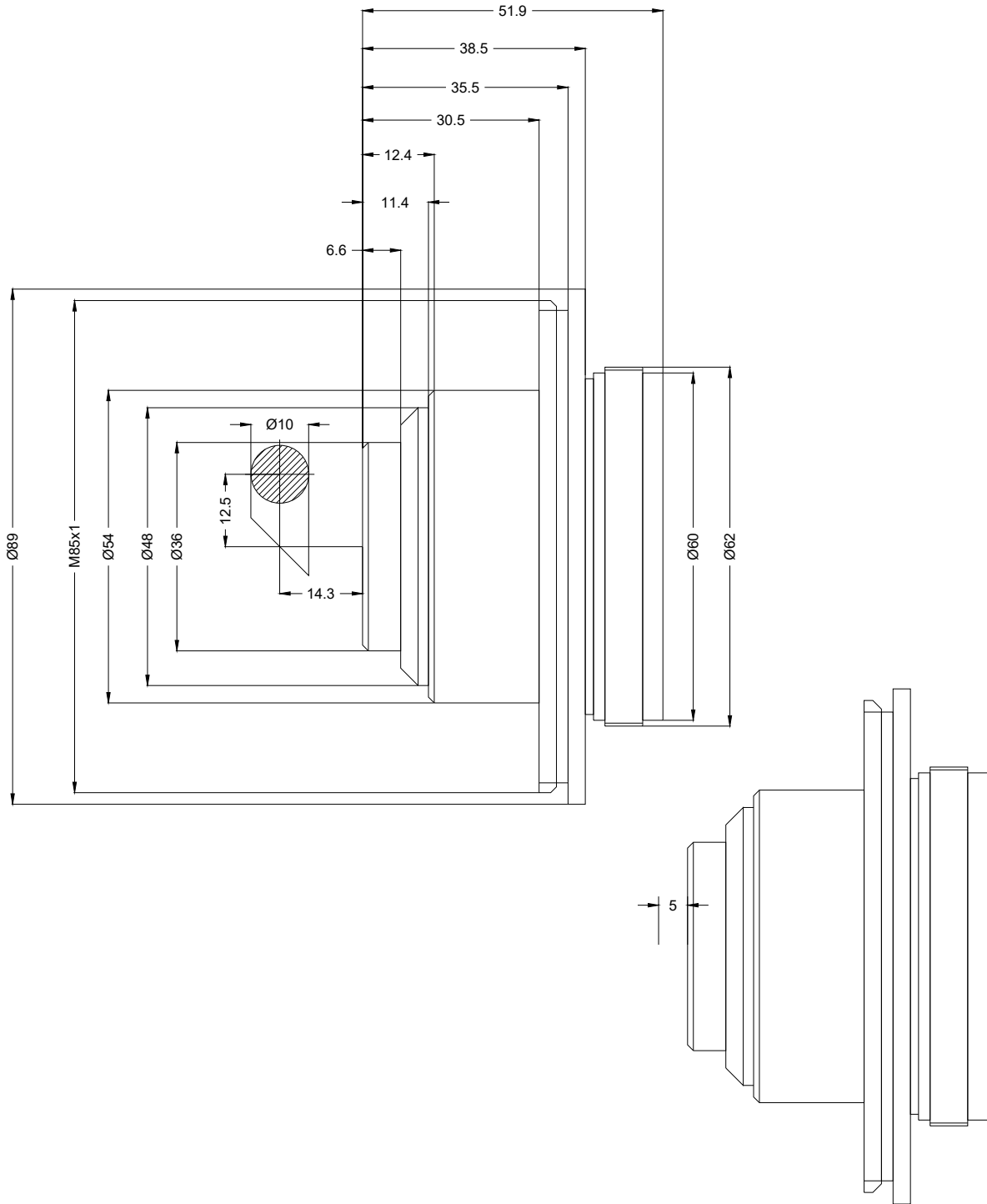
- Telecentric fused silica lens, 1940 nm
- Nominal focal length 50 mm
- Max. input beam diameter 10 mm
- Maximum working area 20 x 20 mm



Wavelength	1940 nm	Mirror distance m1/m2	12.5 / 14.31 mm
Nominal focal length	50 mm	Anti-reflective coating	Standard
Effective focal length	50.000 mm	Telecentric error	1.133 °
Flange focal length	88.264 mm	Cooling method	Air
Max. input beam diameter	10 mm	Lens material	Fused silica
Working distance	71.864 mm	Mounting thread	M85x1
Max. scan field	20 x 20 mm	Lens diameter	62 mm
Minimum spot size	22 µm		

Information is subject to change without notice.  
Product photos are non-binding and may show customized features.





F-Theta lens

f-50T-10-1940

Dimensions are given in millimeters and are intended as reference values.  
Binding information is available on request.

