

F - T H E T A L E N S

f-103T-9-355

en | Data sheet | 1.1

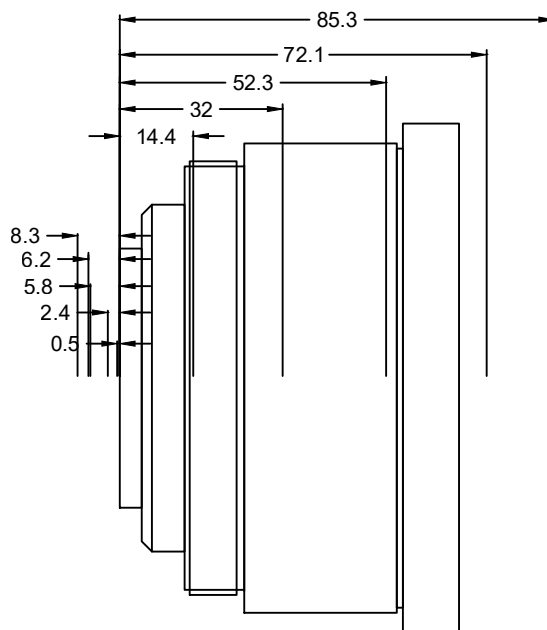
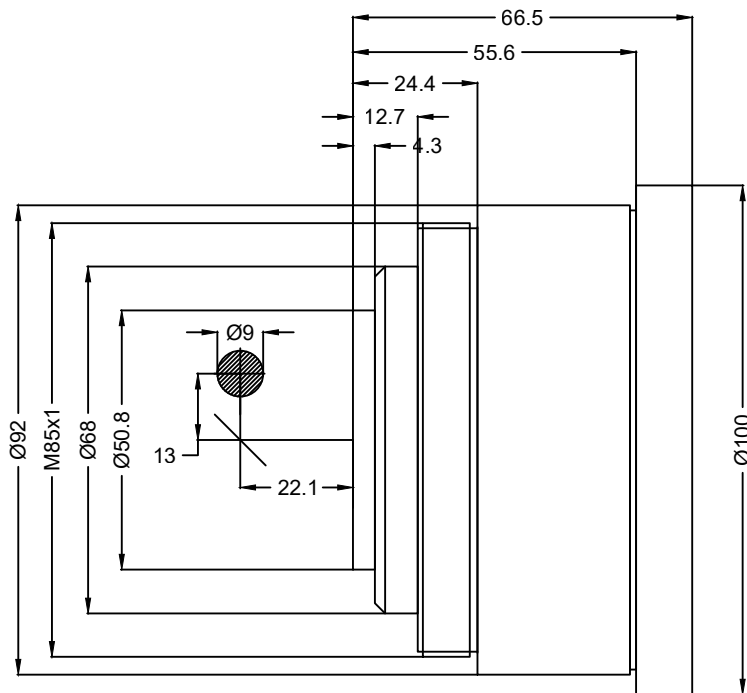
- Telecentric fused silica lens, 355 nm
- Nominal focal length 103 mm
- Max. input beam diameter 9 mm
- Maximum working area 50 x 50 mm



Wavelength	355 nm	Mirror distance m1/m2	13 / 22.1 mm
Nominal focal length	103 mm	Cooling method	Air
Effective focal length	102.892 mm	Lens material	Fused silica
Flange focal length	176.953 mm	Anti-reflective coating	Standard
Max. input beam diameter	9 mm	Telecentric error	1.93 °
Working distance	134.853 mm	Mounting thread	M85x1
Max. scan field	50 x 50 mm	Lens diameter	100 mm
Minimum spot size	7.43 μm		

Information is subject to change without notice.
Product photos are non-binding and may show customized features.





F-Theta lens

f-103T-9-355

Dimensions are given in millimeters and are intended as reference values.
Binding information is available on request.

