

F - T H E T A L E N S

f-167T-14-355

en | Data sheet | 1.2

- Telecentric fused silica lens, 355 nm
- Nominal focal length 167 mm
- Max. input beam diameter 14 mm
- Maximum working area 90 x 90 mm
- Fine focus, high power density

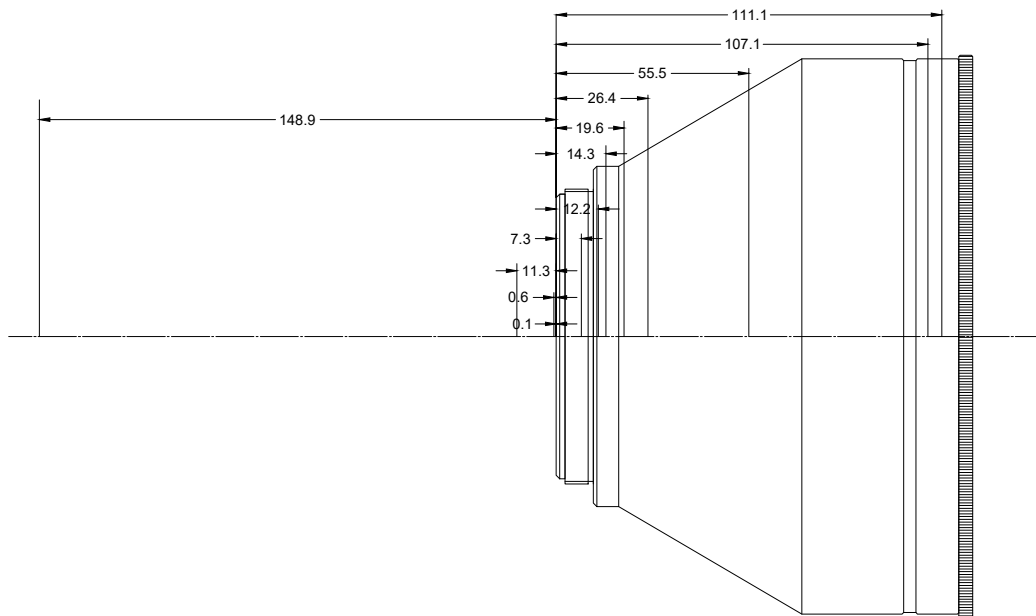
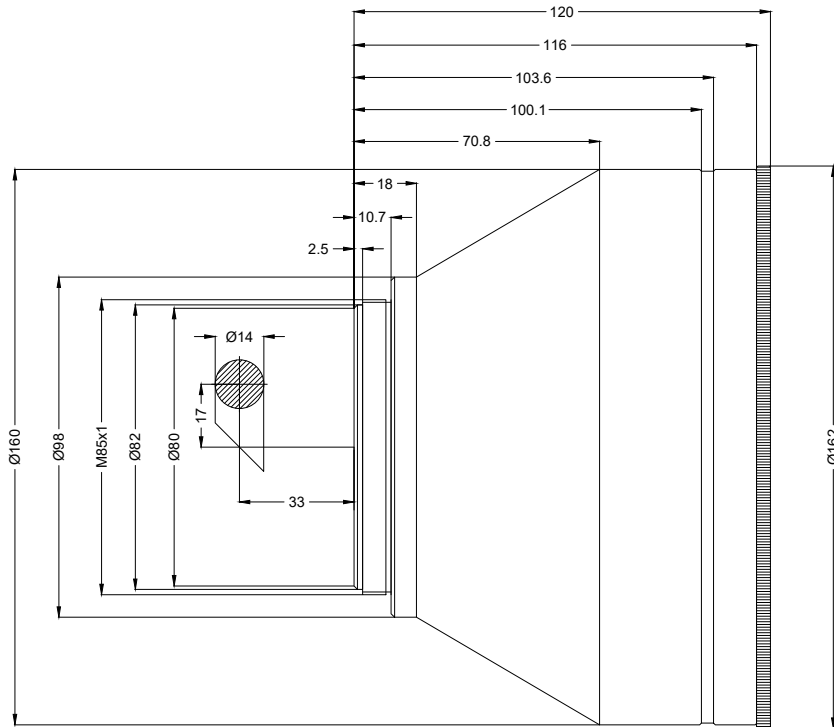


Wavelength	355 nm
Nominal focal length	167 mm
Effective focal length	166.570 mm
Flange focal length	338.463 mm
Max. input beam diameter	14 mm
Working distance	234.520 mm
Max. scan field	90 x 90 mm
Minimum spot size	7.75 μ m

Mirror distance m1/m2	17 / 33 mm
Anti-reflective coating	Standard
Telecentric error	0.48 °
Cooling method	Air
Lens material	Fused silica
Mounting thread	M85x1
Lens diameter	140 mm

Information is subject to change without notice. Product photos are non-binding and may show customized features.





F-Theta lens

f-167T-14-355

Dimensions are given in millimeters and are intended as reference values.
Binding information is available on request.

