

F - T H E T A L E N S

# f-32T-10-355

en | Data sheet | 1.1

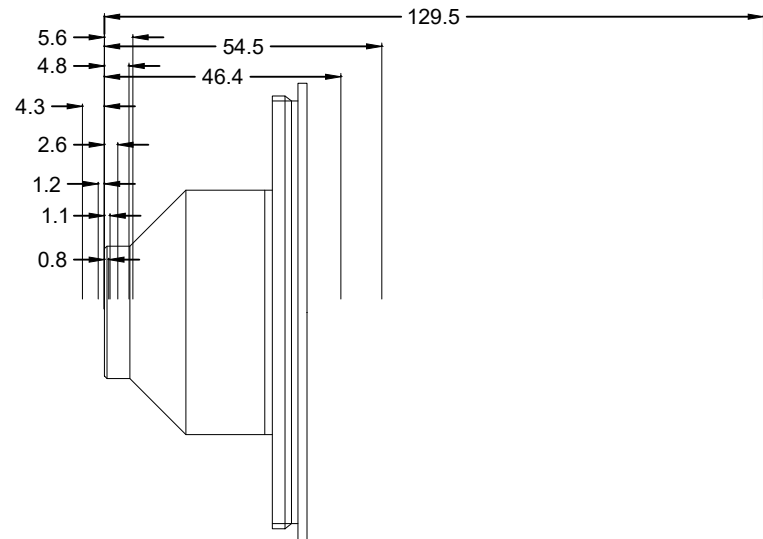
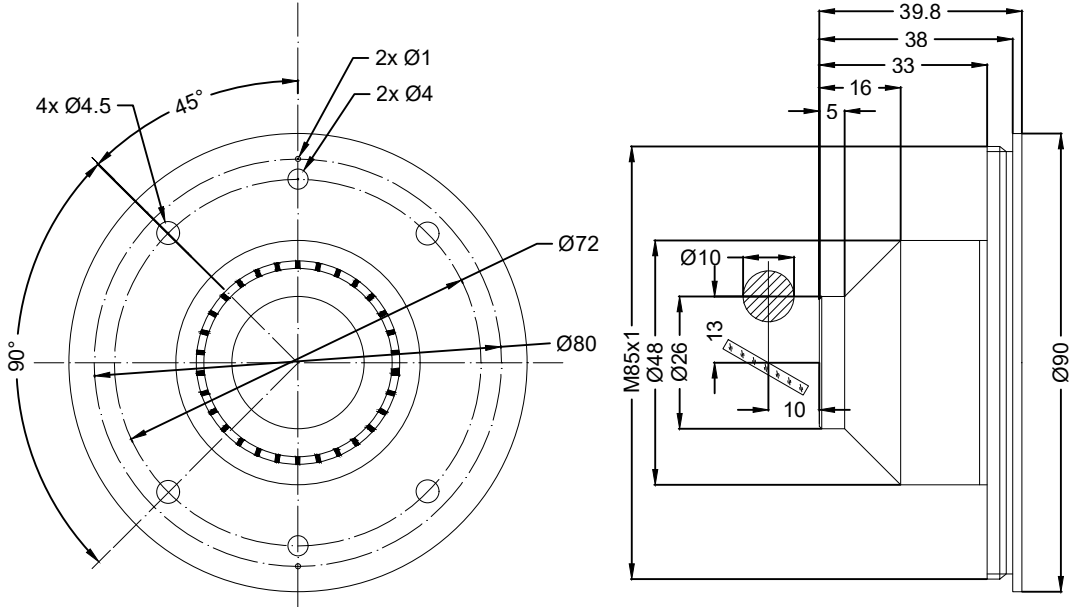
- Telecentric fused silica lens, 355 nm
- Nominal focal length 32 mm
- Max. input beam diameter 10 mm
- Extremely fine focus, highest precision
- Designed for micro laser marking on glass



Wavelength	355 nm	Mirror distance m1/m2	13 / 10 mm
Nominal focal length	32 mm	Anti-reflective coating	Standard
Effective focal length	31.826 mm	Telecentric error	0.4 °
Flange focal length	28.140 mm	Cooling method	Air
Max. input beam diameter	10 mm	Lens material	Fused silica
Working distance	28.493 mm	Mounting thread	M85x1
Max. scan field	1 x 1 mm	Lens diameter	90 mm
Minimum spot size	2.08 µm		

Information is subject to change without notice.  
Product photos are non-binding and may show customized features.





F-Theta lens

f-32T-10-355

Dimensions are given in millimeters and are intended as reference values.  
Binding information is available on request.

