

F - T H E T A L E N S

f-65T-10-355

en | Data sheet | 1.1

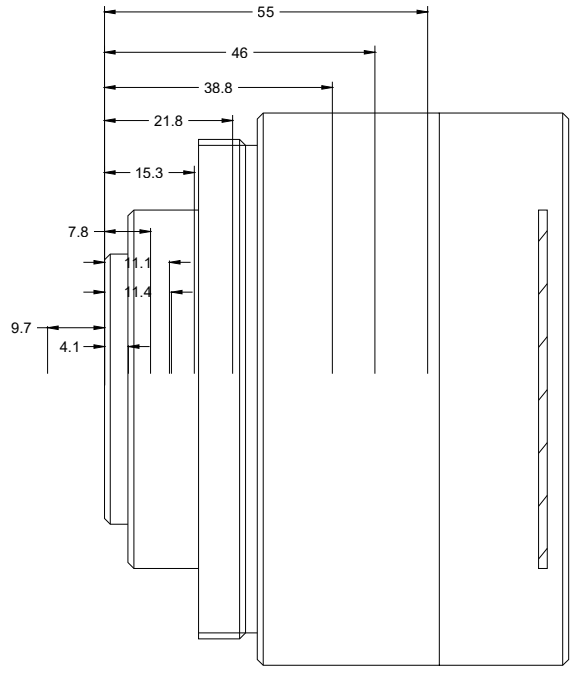
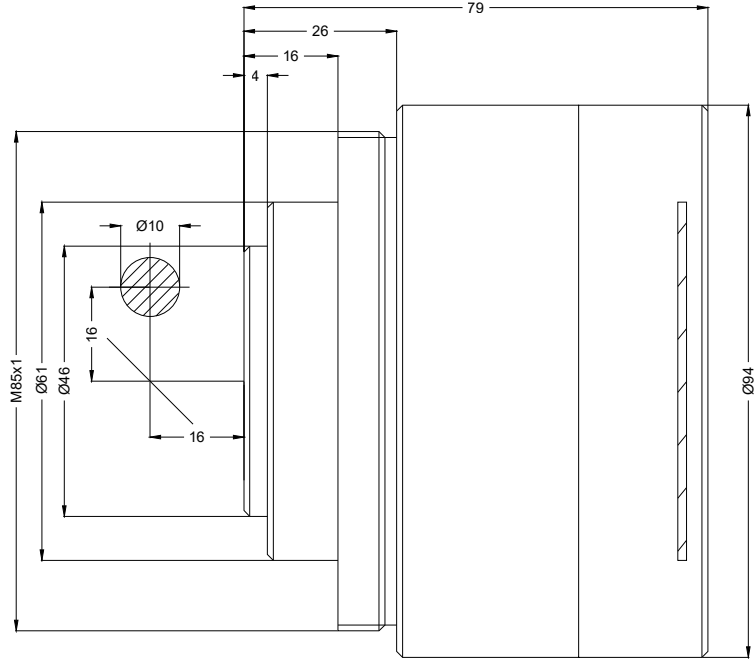
- Telecentric fused silica lens, 355 nm
- Nominal focal length 65 mm
- Max. input beam diameter 10 mm
- Maximum working area 15 x 15 mm



Wavelength	355 nm	Mirror distance m1/m2	16 / 16 mm
Nominal focal length	65 mm	Anti-reflective coating	Standard
Effective focal length	65.500 mm	Telecentric error	1.8 °
Flange focal length	134.106 mm	Cooling method	Air
Max. input beam diameter	10 mm	Lens material	Fused silica
Working distance	81.106 mm	Mounting thread	M85x1
Max. scan field	15 x 15 mm	Lens diameter	94 mm
Minimum spot size	4.22 µm		

Information is subject to change without notice.
Product photos are non-binding and may show customized features.





F-Theta lens

f-65T-10-355

Dimensions are given in millimeters and are intended as reference values.
Binding information is available on request.

