

F - T H E T A L E N S

f-70T-14-355

en | Data sheet | 1.1

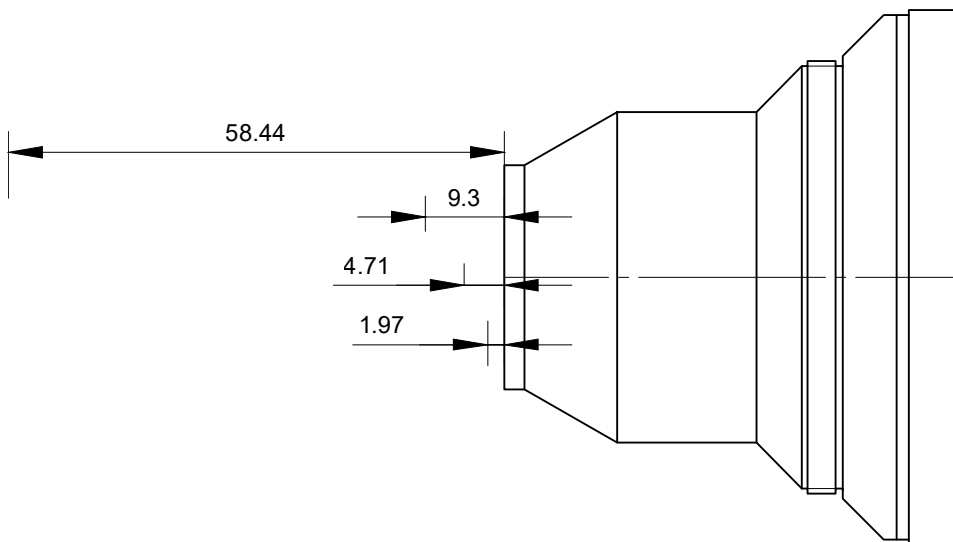
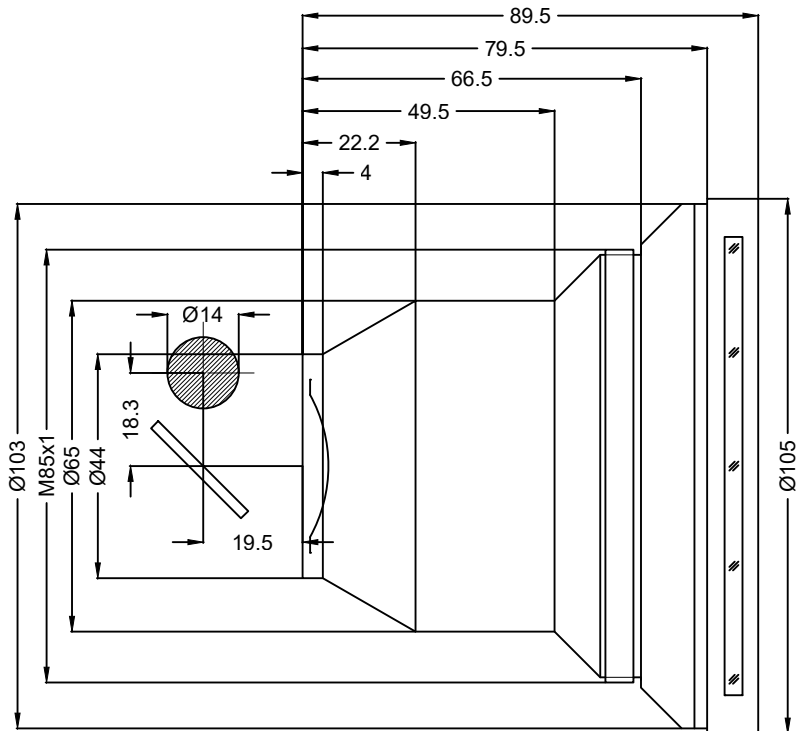
- Telecentric fused silica lens, 355 nm
- Nominal focal length 70 mm
- Max. input beam diameter 14 mm
- Maximum working area 15 x 15 mm
- Fine focus, high power density



Wavelength	355 nm	Mirror distance m1/m2	18.3 / 19.5 mm
Nominal focal length	70 mm	Anti-reflective coating	Standard
Effective focal length	71.141 mm	Telecentric error	1.3 °
Flange focal length	93.346 mm	Cooling method	Air
Max. input beam diameter	14 mm	Lens material	Fused silica
Working distance	70.346 mm	Mounting thread	M85x1
Max. scan field	15 x 15 mm	Lens diameter	105 mm
Minimum spot size	3.25 µm		

Information is subject to change without notice.
Product photos are non-binding and may show customized features.





F-Theta lens

f-70T-14-355

Dimensions are given in millimeters and are intended as reference values.
Binding information is available on request.

