

F - T H E T A L E N S

f-100T-14-510-550-v2

en | Data sheet | 1.0

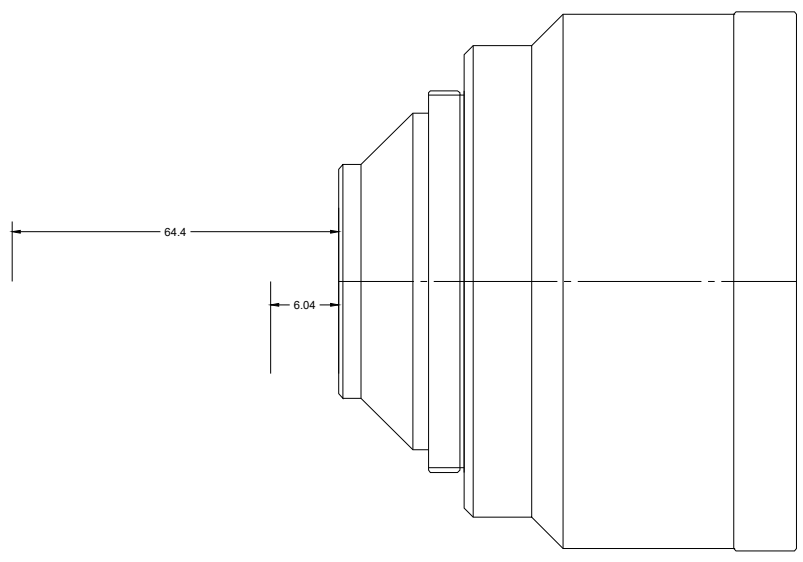
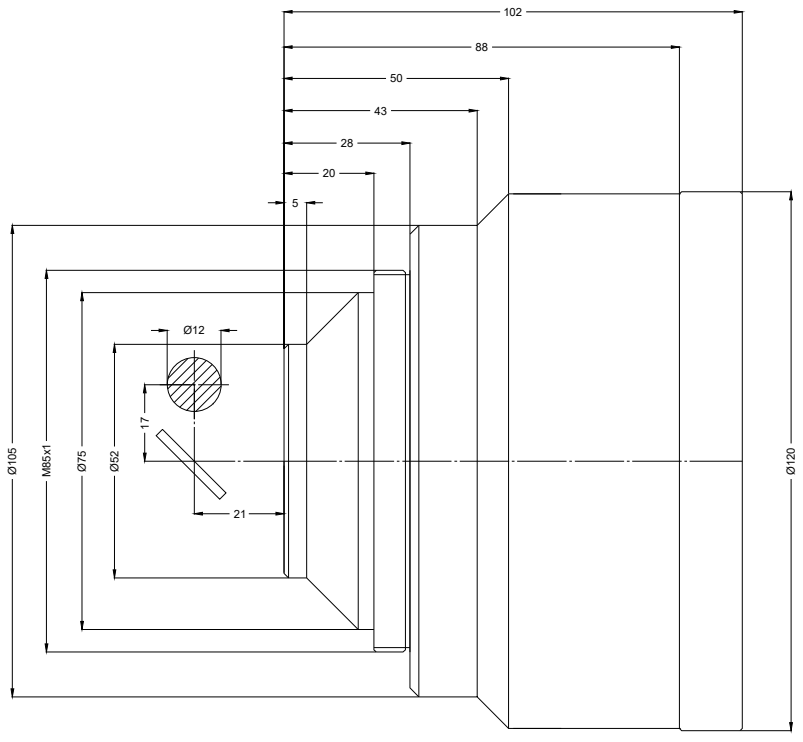
- Telecentric fused silica lens
- Wavelength 510 – 550 nm
- Nominal focal length 100 mm
- Max. input beam diameter 14 mm
- Maximum working area 50 x 50 mm



Wavelength	510 – 550 nm	Mirror distance m1/m2	17 / 21 mm
Nominal focal length	100 mm	Anti-reflective coating	Standard
Effective focal length	100.000 mm	Telecentric error	2.1 °
Flange focal length	207.000 mm	Cooling method	Air
Max. input beam diameter	14 mm	Lens material	Fused silica
Working distance	133.000 mm	Mounting thread	M85x1
Max. scan field	50 x 50 mm	Lens diameter	120 mm
Minimum spot size	3.62 µm		

Information is subject to change without notice.
Product photos are non-binding and may show customized features.





F-Theta lens

f-100T-14-510-550-v2

Dimensions are given in millimeters and are intended as reference values.
Binding information is available on request.

