

F - T H E T A L E N S

# f-210-30-980-M95

en | Data sheet | 1.1

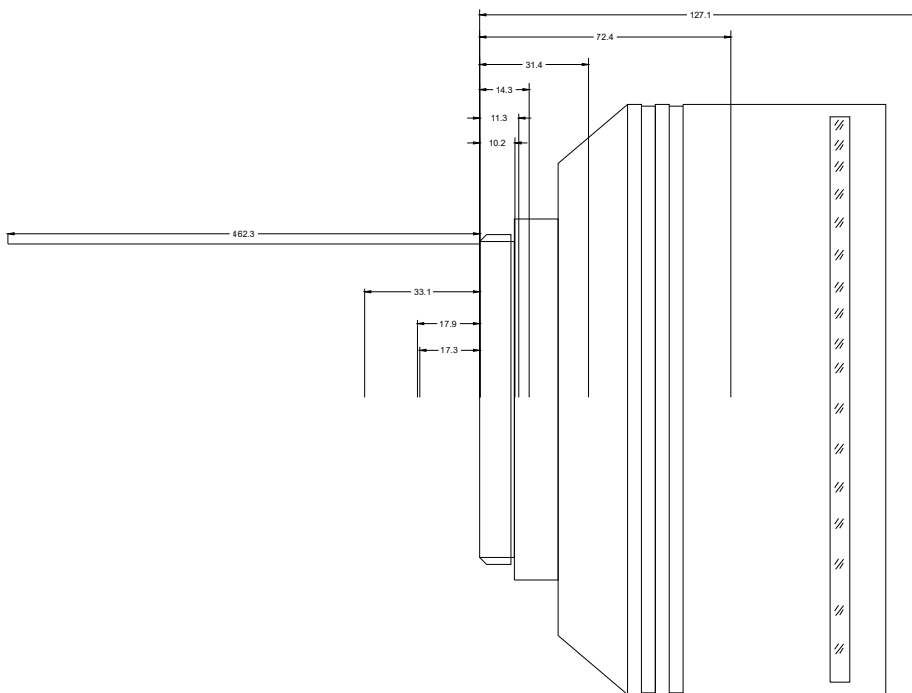
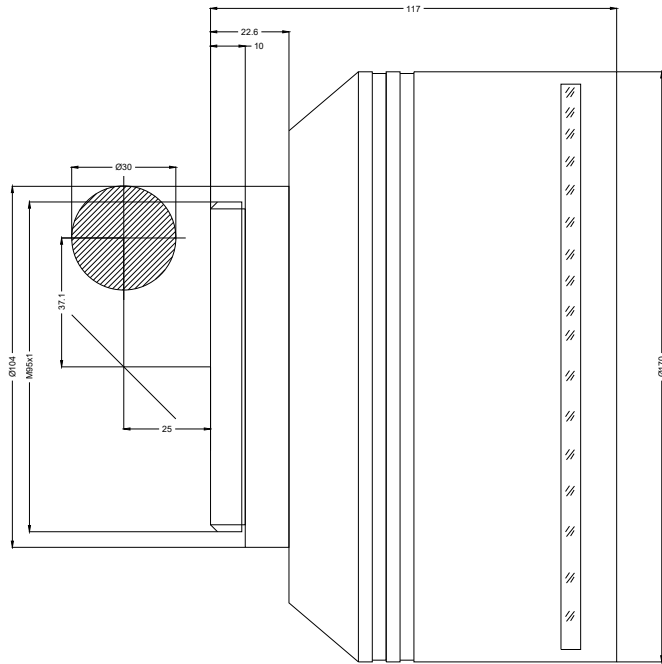
- Telecentric F-Theta Lens, 980 nm
- Nominal focal length 210 mm
- Max. input beam diameter 30 mm
- Maximum working area 105 x 105 mm
- Very fine focus, high precision



Wavelength	980 nm	Mirror distance m1/m2	37.12 / 25 – 36 mm
Nominal focal length	210 mm	Anti-reflective coating	Standard
Effective focal length	210.000 mm	Telecentric error	4 °
Flange focal length	379.941 mm	Cooling method	Air
Max. input beam diameter	30 mm	Lens material	Optical glass
Working distance	272.941 mm	Mounting thread	M95x1
Max. scan field	105 x 105 mm	Lens diameter	170 mm
Minimum spot size	11.94 µm		

Information is subject to change without notice.  
Product photos are non-binding and may show customized features.





F-Theta lens

f-210-30-980-M95

Dimensions are given in millimeters and are intended as reference values.  
Binding information is available on request.

