

F - T H E T A L E N S

f-300M-8-1030-1080

en | Data sheet | 1.0

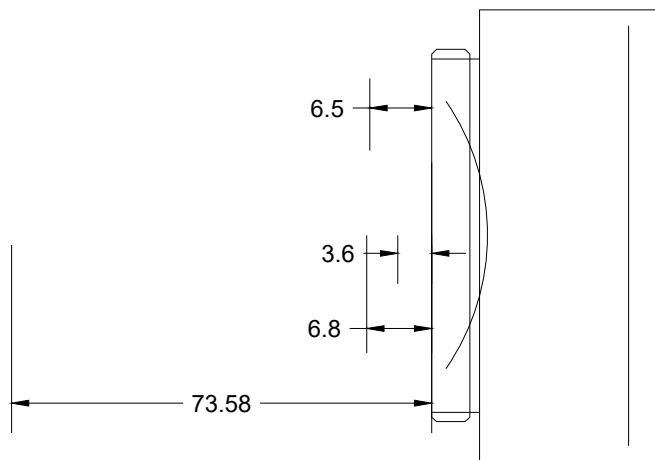
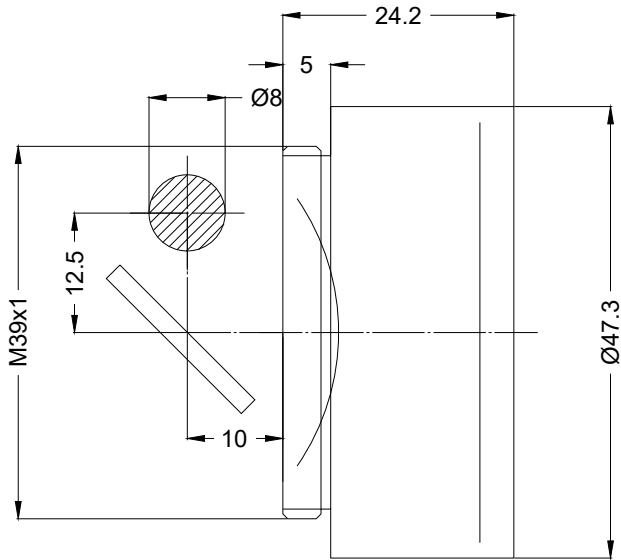
- Mini Fused Silica F-Theta Lens, 1030 – 1080 nm
- Nominal focal length 300 mm
- Max. input beam diameter 8 mm
- Maximum working area 200 x 200 mm
- Extra compact design



| | | | |
|--------------------------|----------------|-------------------------|--------------|
| Wavelength | 1030 – 1080 nm | Minimum spot size | 68.6 μm |
| Nominal focal length | 300 mm | Mirror distance m1/m2 | 12.5 / 10 mm |
| Effective focal length | 300.000 mm | Anti-reflective coating | Standard |
| Flange focal length | 355.250 mm | Cooling method | Air |
| Max. input beam diameter | 8 mm | Lens material | Fused silica |
| Working distance | 336.05 mm | Mounting thread | M39x1 |
| Max. scan field | 200 x 200 mm | Lens diameter | 47.3 mm |

Information is subject to change without notice.
Product photos are non-binding and may show customized features.





F-Theta lens

f-300M-8-1030-1080

Dimensions are given in millimeters and are intended as reference values.
Binding information is available on request.

