

F - T H E T A L E N S

# f-170-10-1030-1080

en | Data sheet | 1.1

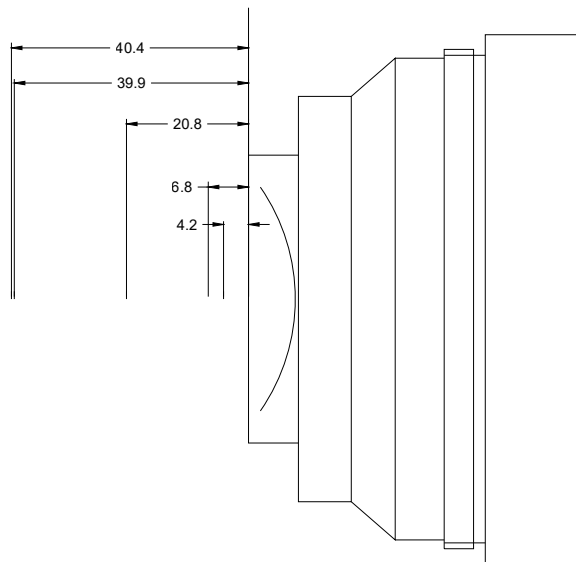
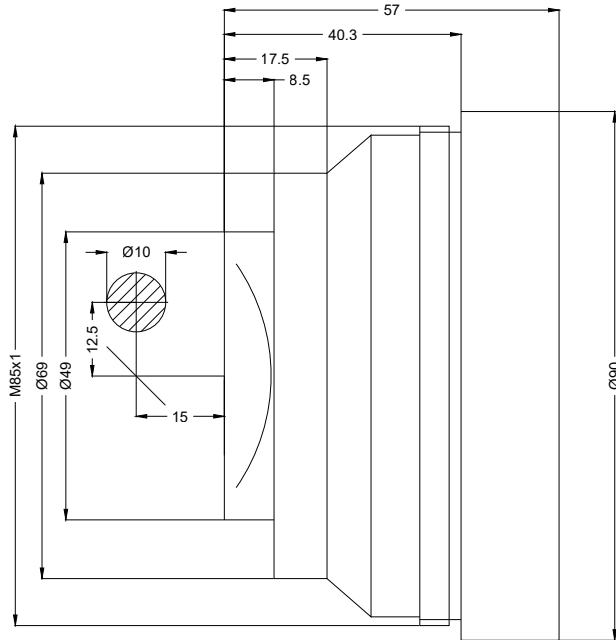
- Fused silica lens, 1030 – 1080 nm
- Nominal focal length 170 mm
- Max. input beam diameter 10 mm
- Maximum working area 117 x 117 mm



Wavelength	1030 – 1080 nm	Minimum spot size	33.1 $\mu$ m
Nominal focal length	170 mm	Mirror distance m1/m2	12.5 / 15 mm
Effective focal length	172.006 mm	Anti-reflective coating	Standard
Flange focal length	216.437 mm	Cooling method	Air
Max. input beam diameter	10 mm	Lens material	Fused silica
Working distance	199.747 mm	Mounting thread	M85x1
Max. scan field	117.5 x 117.5 mm	Lens diameter	90 mm

Information is subject to change without notice.  
Product photos are non-binding and may show customized features.





F-Theta lens

f-170-10-1030-1080

Dimensions are given in millimeters and are intended as reference values.  
Binding information is available on request.

