

F - T H E T A L E N S

f-210-20-1030-1080-W

en | Data sheet | 1.0

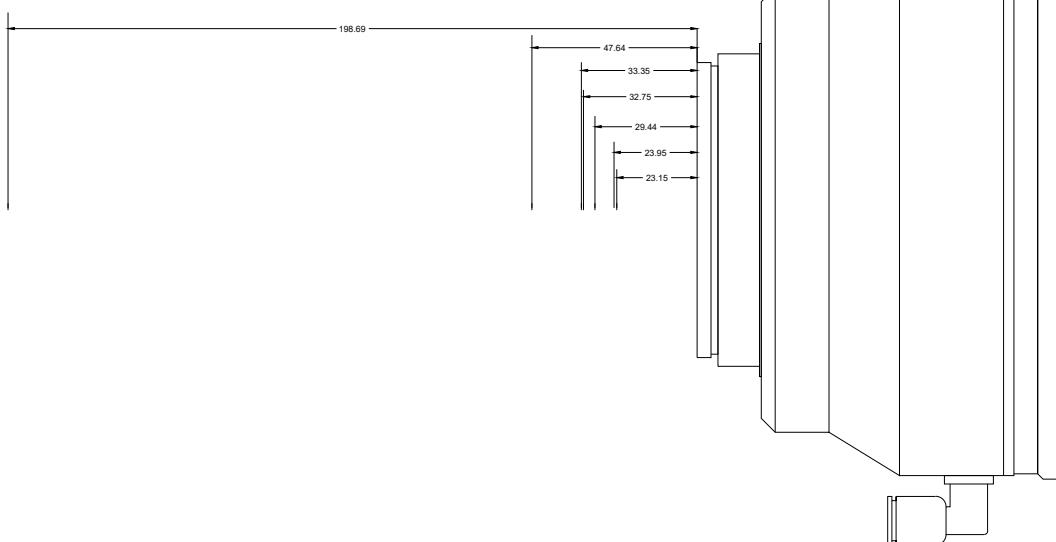
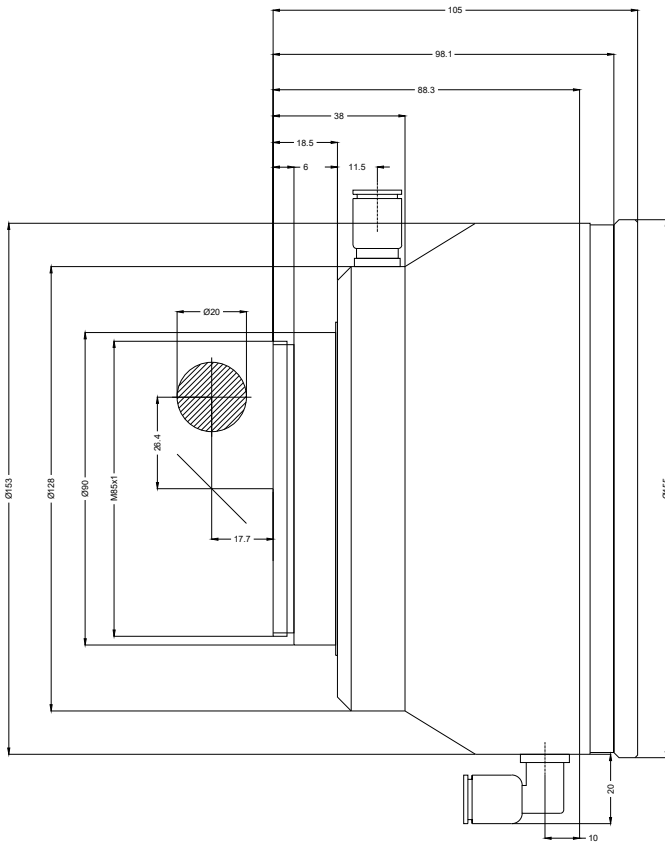
- Fused silica lens, 1030 – 1080 nm
- Nominal focal length 210 mm
- Max. input beam diameter 20 mm
- Maximum working area 120 x 120 mm
- Water-cooled, high power compatibility



Wavelength	1030 – 1080 nm	Minimum spot size	21.42 μm
Nominal focal length	210 mm	Mirror distance m1/m2	26.4 / 17.7 mm
Effective focal length	215.216 mm	Anti-reflective coating	Standard
Flange focal length	365.430 mm	Cooling method	Water
Max. input beam diameter	20 mm	Lens material	Fused silica
Working distance	269.430 mm	Mounting thread	M85x1
Max. scan field	120 x 120 mm	Lens diameter	155 mm

Information is subject to change without notice.
Product photos are non-binding and may show customized features.





F-Theta lens

f-210-20-1030-1080-W

Dimensions are given in millimeters and are intended as reference values.
Binding information is available on request.

