

F - T H E T A L E N S

f-250-15-1030-1080

en | Data sheet | 1.1

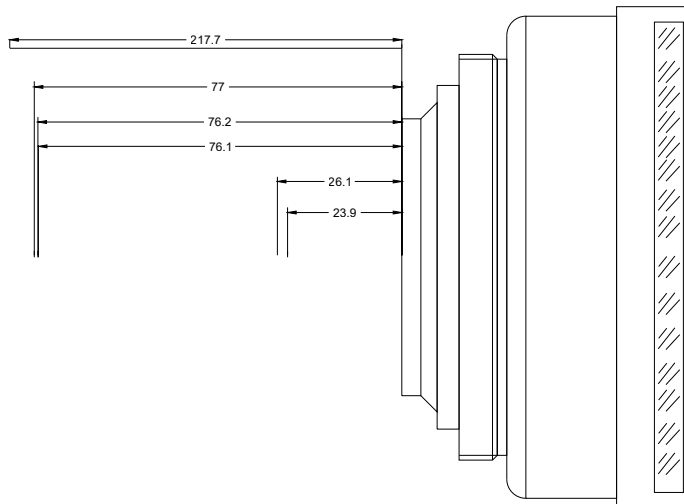
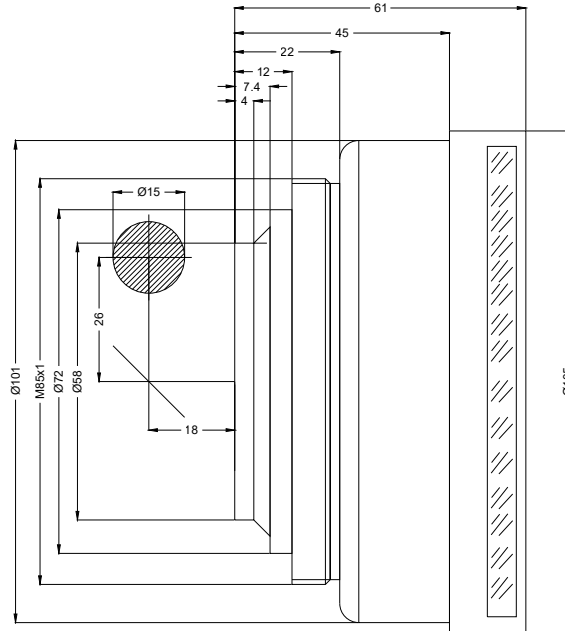
- Fused silica lens, 1030 – 1080 nm
- Nominal focal length 250 mm
- Max. input beam diameter 15 mm
- Maximum working area 150 x 150 mm



Wavelength	1030 – 1080 nm	Minimum spot size	32.45 µm
Nominal focal length	250 mm	Mirror distance m1/m2	26 / 18 mm
Effective focal length	250.000 mm	Anti-reflective coating	Standard
Flange focal length	385.434 mm	Cooling method	Air
Max. input beam diameter	15 mm	Lens material	Fused silica
Working distance	346.434 mm	Mounting thread	M85x1
Max. scan field	150 x 150 mm	Lens diameter	105 mm

Information is subject to change without notice.
Product photos are non-binding and may show customized features.





F-Theta lens

f-250-15-1030-1080

Dimensions are given in millimeters and are intended as reference values.
Binding information is available on request.

