

F - T H E T A L E N S

f-254-30-1030-1080

en | Data sheet | 1.1

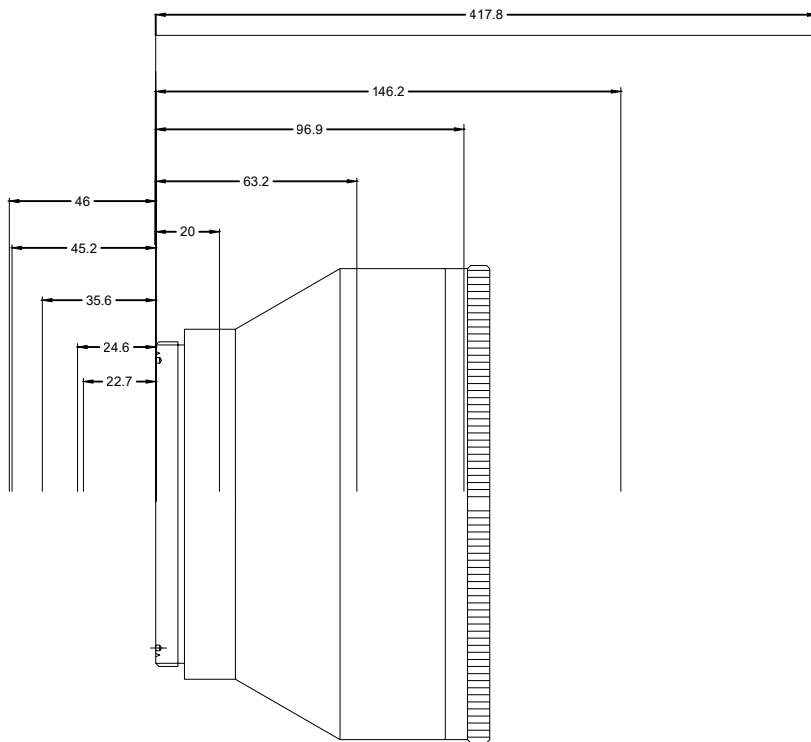
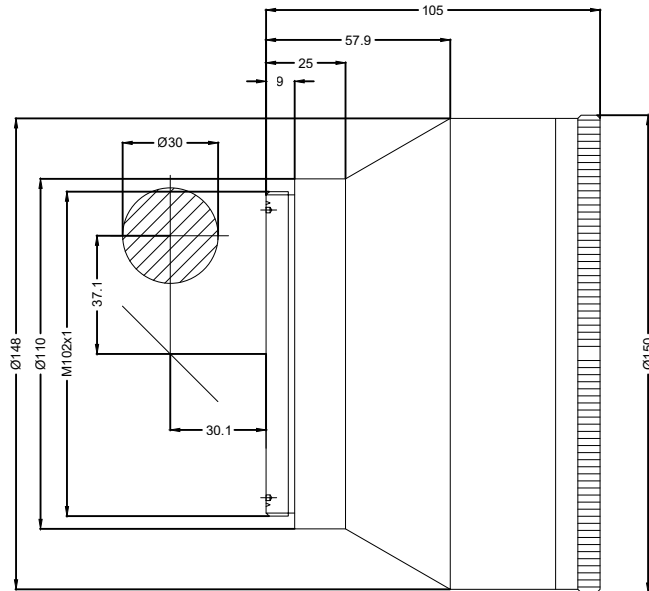
- Fused silica lens, 1030 – 1080 nm
- Nominal focal length 254 mm
- Max. input beam diameter 30 mm
- Maximum working area 120 x 120 mm
- Very fine focus, high power density



Wavelength	1030 – 1080 nm	Minimum spot size	16.75 µm
Nominal focal length	254 mm	Mirror distance m1/m2	37.12 / 30.12 mm
Effective focal length	254.000 mm	Anti-reflective coating	Standard
Flange focal length	415.357 mm	Cooling method	Air
Max. input beam diameter	30 mm	Lens material	Fused silica
Working distance	319.357 mm	Mounting thread	M102x1
Max. scan field	120 x 120 mm	Lens diameter	150 mm

Information is subject to change without notice.
Product photos are non-binding and may show customized features.





F-Theta lens

f-254-30-1030-1080

Dimensions are given in millimeters and are intended as reference values.
Binding information is available on request.

