

F - T H E T A L E N S

# f-275-14-1030-1080

en | Data sheet | 1.2

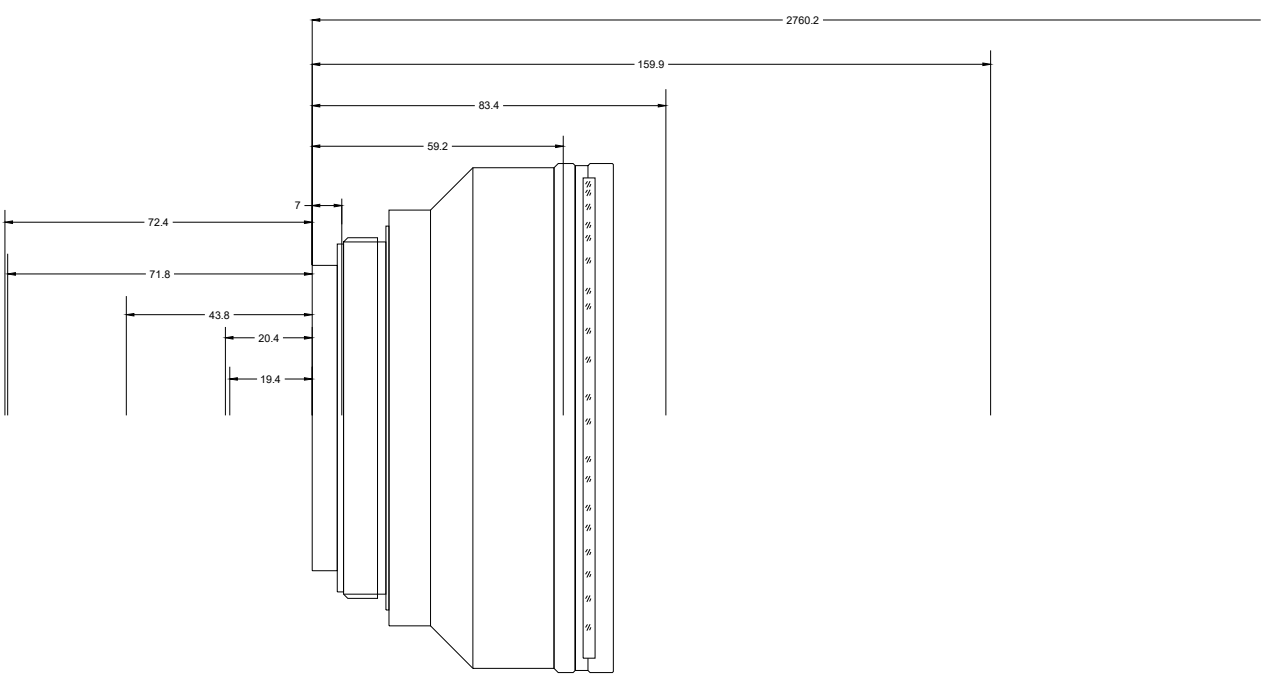
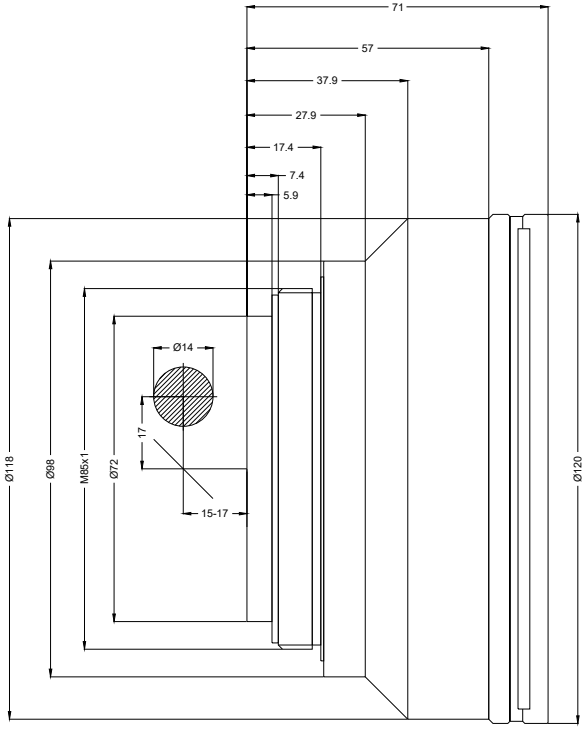
- Fused silica lens, 1030 – 1080 nm
- Nominal focal length 275 mm
- Maximum input aperture 14 mm
- Maximum working area 165 x 165 mm



Wavelength	1030 – 1080 nm	Minimum spot size	38.24 $\mu$ m
Nominal focal length	275 mm	Mirror distance m1/m2	17 / 15 – 17 mm
Effective focal length	274.987 mm	Anti-reflective coating	Standard
Flange focal length	388.571 mm	Cooling method	Air
Max. input beam diameter	14 mm	Lens material	Fused silica
Working distance	334.971 mm	Mounting thread	M85x1
Max. scan field	165 x 165 mm	Lens diameter	120 mm

Information is subject to change without notice.  
Product photos are non-binding and may show customized features.





F-Theta lens

f-275-14-1030-1080

Dimensions are given in millimeters and are intended as reference values.  
Binding information is available on request.

