

F - T H E T A L E N S

f-295-10-1030-1080

en | Data sheet | 1.2

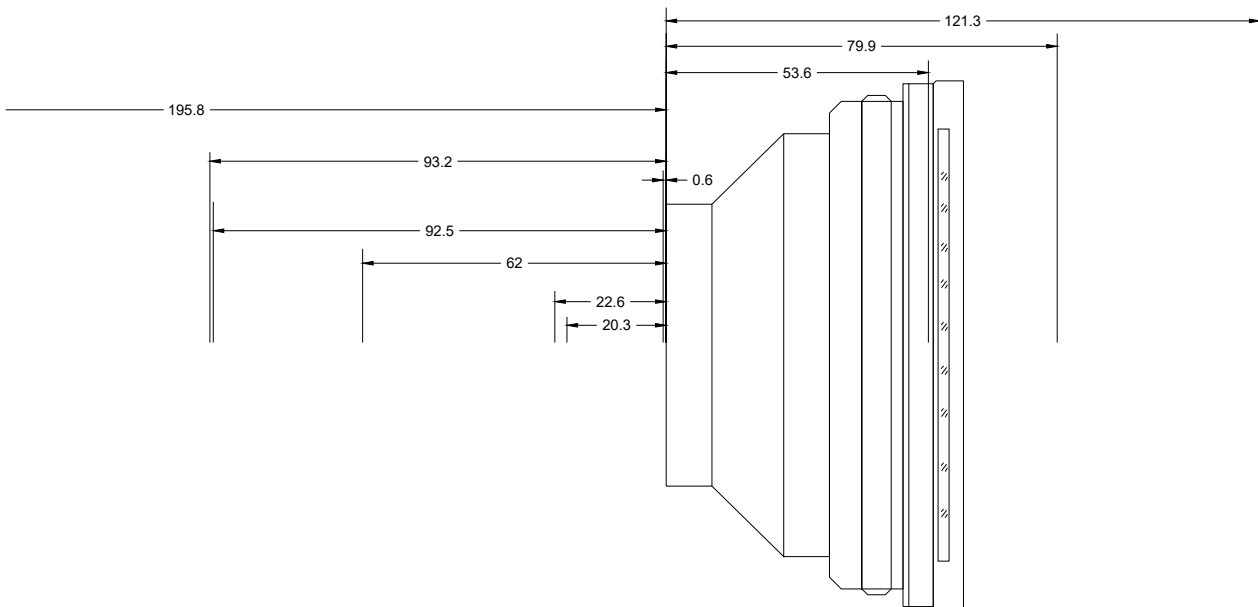
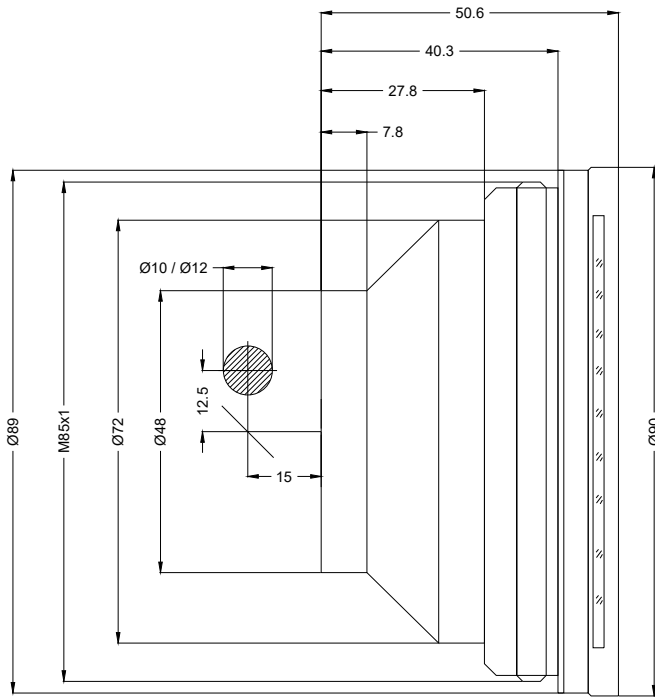
- Fused silica lens, 1030 – 1080 nm
- Nominal focal length 295 mm
- Maximum input aperture 10 mm
- Maximum working area 203 x 203 mm



Wavelength	1030 – 1080 nm	Mirror distance m1/m2	12.5 / 15 mm
Nominal focal length	295 mm	Anti-reflective coating	Standard
Effective focal length	295.353 mm	Cooling method	Air
Flange focal length	368.792 mm	Lens material	Fused silica
Working distance	358.502 mm	Mounting thread	M85x1
Max. scan field	203 x 203 mm	Lens diameter	90 mm
Minimum spot size	57.44 μ m		

Information is subject to change without notice.
Product photos are non-binding and may show customized features.





F-Theta lens

f-295-10-1030-1080

Dimensions are given in millimeters and are intended as reference values.
Binding information is available on request.

