

F - T H E T A L E N S

f-350-14-1030-1080

en | Data sheet | 1.1

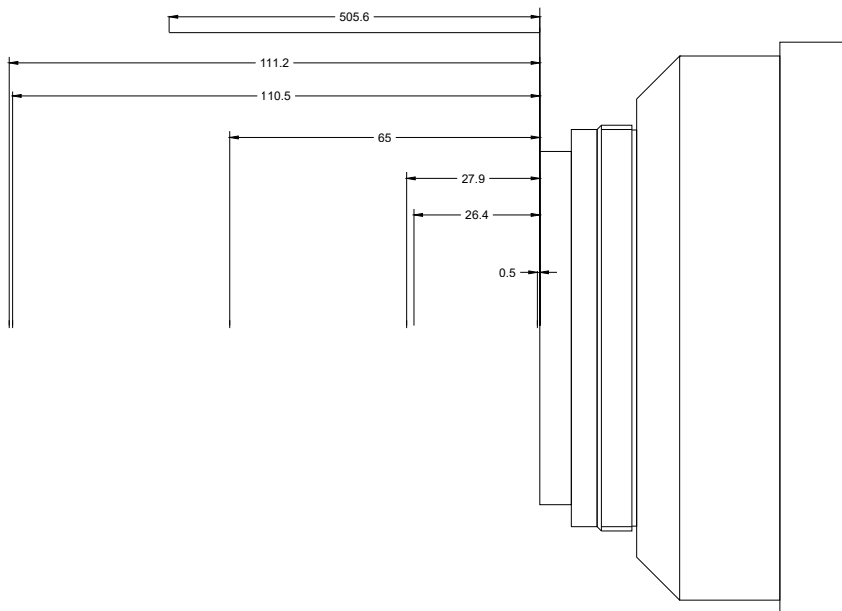
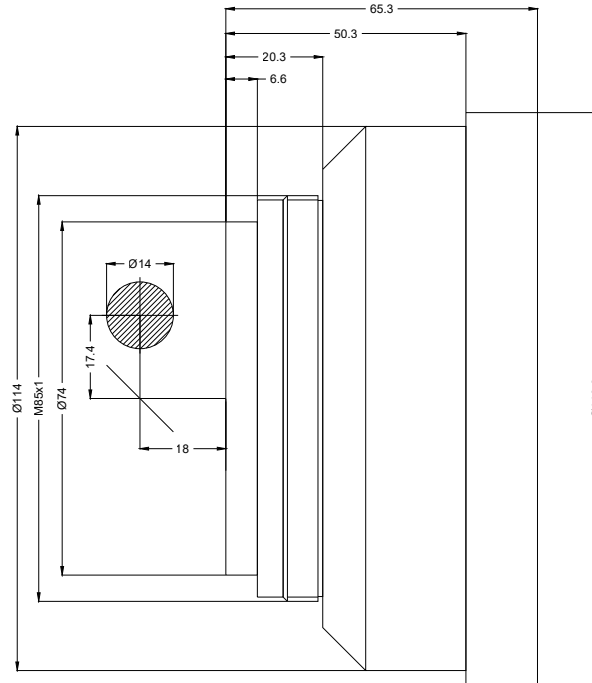
- Fused silica lens, 1030 – 1080 nm
- Nominal focal length 350 mm
- Max. input beam diameter 14 mm
- Maximum working area 250 x 250 mm



Wavelength	1030 – 1080 nm	Minimum spot size	48.68 µm
Nominal focal length	350 mm	Mirror distance m1/m2	17.42 / 18 mm
Effective focal length	350.000 mm	Anti-reflective coating	Standard
Flange focal length	472.538 mm	Cooling method	Air
Max. input beam diameter	14 mm	Lens material	Fused silica
Working distance	427.538 mm	Mounting thread	M85x1
Max. scan field	250 x 250 mm	Lens diameter	120 mm

Information is subject to change without notice.
Product photos are non-binding and may show customized features.





F-Theta lens

f-350-14-1030-1080

Dimensions are given in millimeters and are intended as reference values.
Binding information is available on request.

