

F - T H E T A L E N S

f-400-30-1030-1080-W

en | Data sheet | 1.0

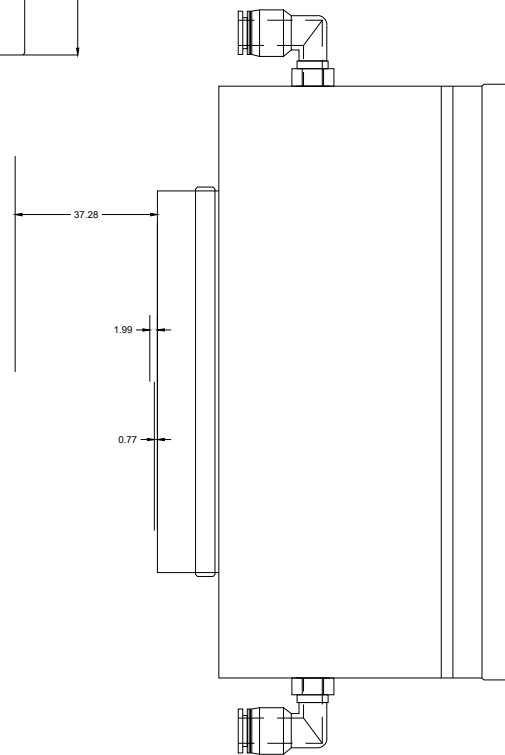
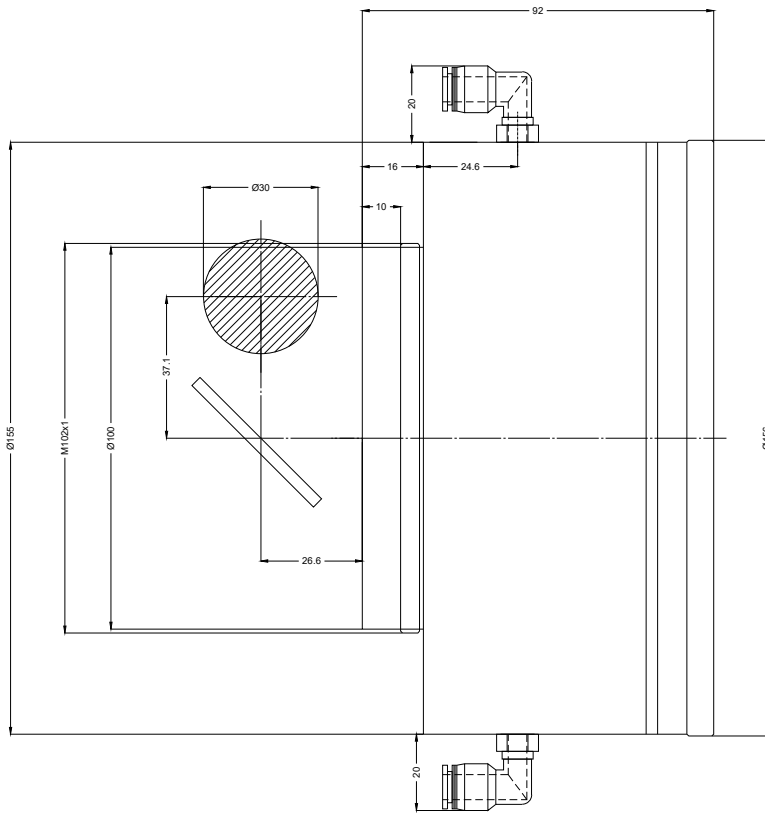
- Fused silica lens, 1030 – 1080 nm
- Nominal focal length 400 mm
- Max. input beam diameter 30 mm
- Maximum working area 200 x 200 mm
- Water-cooled, high power compatibility



Wavelength	1030 – 1080 nm	Minimum spot size	13.46 μ m
Nominal focal length	400 mm	Mirror distance m1/m2	37.12 / 26.6 mm
Effective focal length	400.000 mm	Anti-reflective coating	Standard
Flange focal length	578.000 mm	Cooling method	Water
Max. input beam diameter	30 mm	Lens material	Fused silica
Working distance	502.000 mm	Mounting thread	M102x1
Max. scan field	180 x 180 mm	Lens diameter	156 mm

Information is subject to change without notice.
Product photos are non-binding and may show customized features.





F-Theta lens

f-400-30-1030-1080-W

Dimensions are given in millimeters and are intended as reference values.
Binding information is available on request.

