

F - T H E T A L E N S

f-423-14-1030-1080

en | Data sheet | 1.0

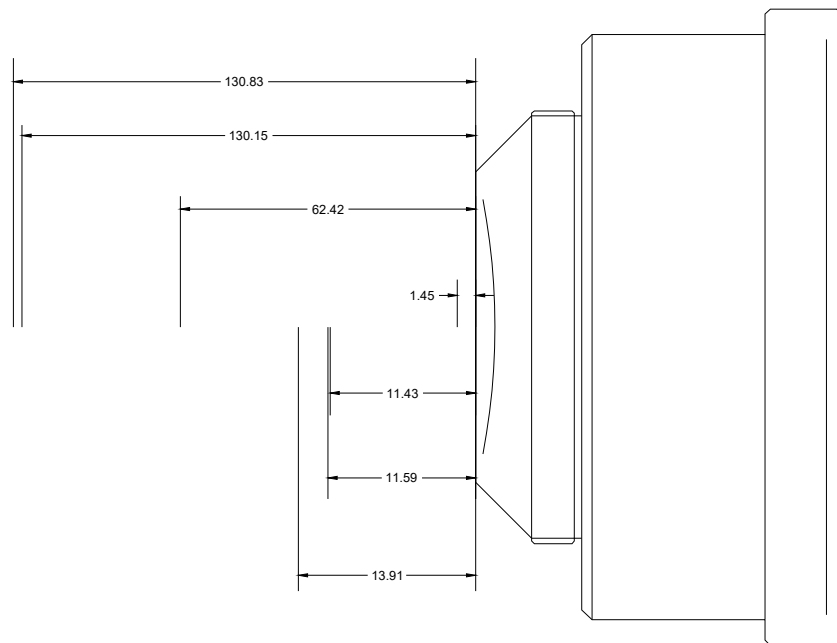
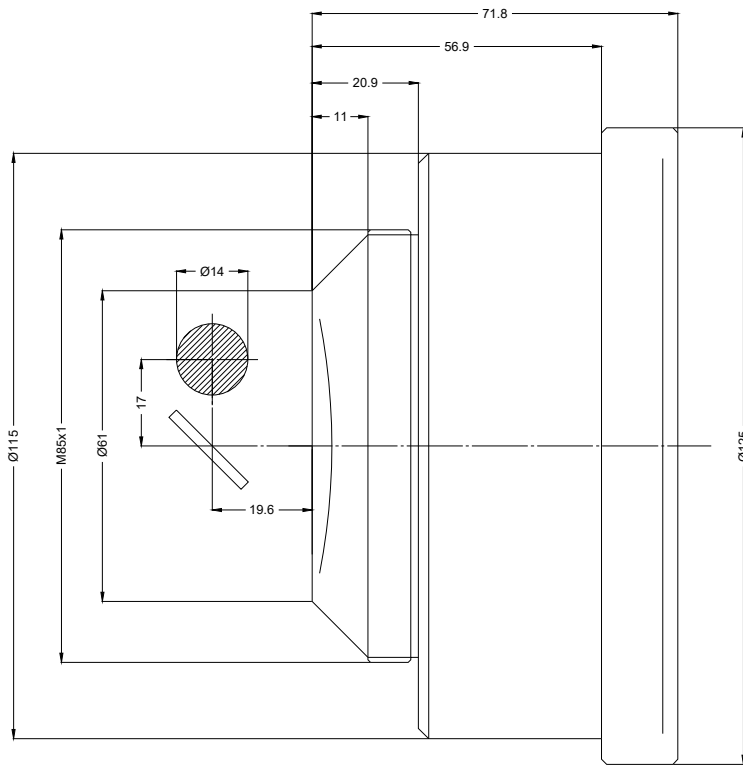
- Fused silica lens, 1030 – 1080 nm
- Nominal focal length 423 mm
- Max. input beam diameter 14 mm
- Maximum working area 255 x 255 mm



| | | | |
|--------------------------|----------------|-------------------------|--------------|
| Wavelength | 1030 – 1080 nm | Minimum spot size | 29.5 µm |
| Nominal focal length | 423 mm | Mirror distance m1/m2 | 17 / 19.6 mm |
| Effective focal length | 423.000 mm | Anti-reflective coating | Standard |
| Flange focal length | 534.100 mm | Cooling method | Air |
| Max. input beam diameter | 14 mm | Lens material | Fused silica |
| Working distance | 500.200 mm | Mounting thread | M85x1 |
| Max. scan field | 255 x 255 mm | Lens diameter | 104 mm |

Information is subject to change without notice.
Product photos are non-binding and may show customized features.





F-Theta lens

f-423-14-1030-1080

Dimensions are given in millimeters and are intended as reference values.
Binding information is available on request.

