

F - T H E T A L E N S

f-450-20-1030-1080

en | Data sheet | 1.0

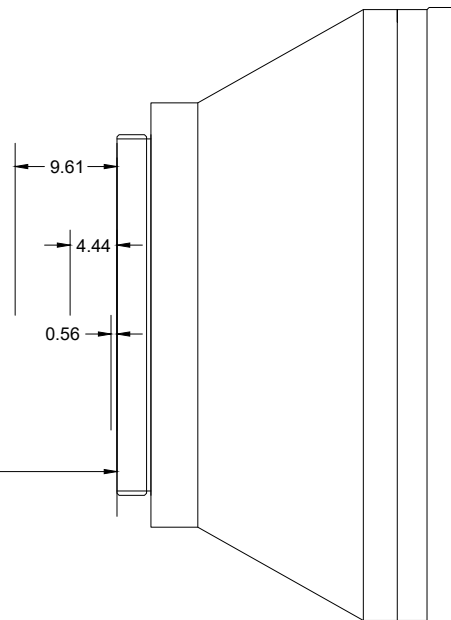
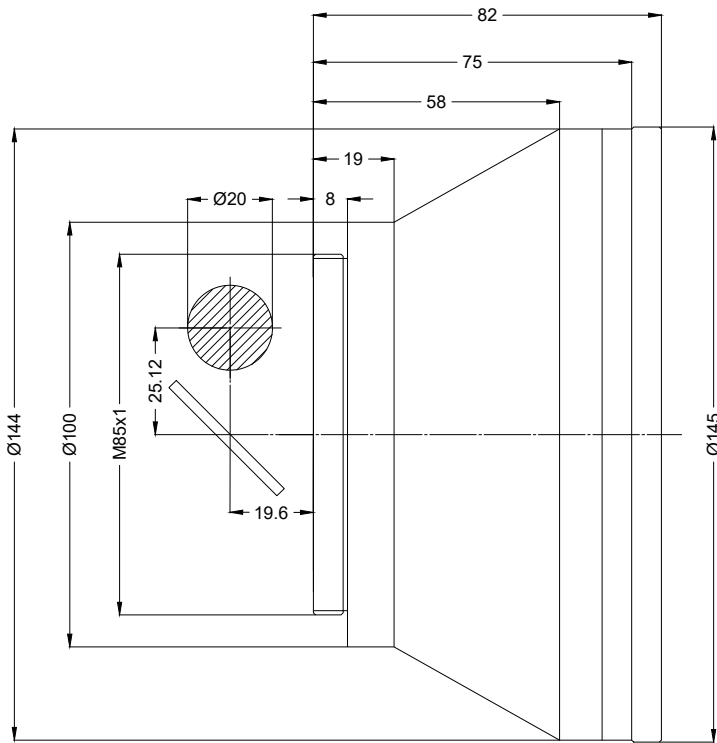
- Fused silica lens, 1030 – 1080 nm
- Nominal focal length 450 mm
- Max. input beam diameter 20 mm
- Maximum working area 315 x 315 mm



Wavelength	1030 – 1080 nm	Minimum spot size	22.59 µm
Nominal focal length	450 mm	Mirror distance m1/m2	25.12 / 19.6 mm
Effective focal length	450.000 mm	Anti-reflective coating	Standard
Flange focal length	610.000 mm	Cooling method	Air
Max. input beam diameter	20 mm	Lens material	Fused silica
Working distance	536.000 mm	Mounting thread	M85x1
Max. scan field	315 x 315 mm	Lens diameter	145 mm

Information is subject to change without notice.
Product photos are non-binding and may show customized features.





F-Theta lens

f-450-20-1030-1080

Dimensions are given in millimeters and are intended as reference values.
Binding information is available on request.

