

F - T H E T A L E N S

f-480-20-1030-1080

en | Data sheet | 1.2

- Fused silica lens, 1030 – 1080 nm
- Nominal focal length 480 mm
- Maximum input aperture 20 mm
- Maximum working area 280 x 280 mm

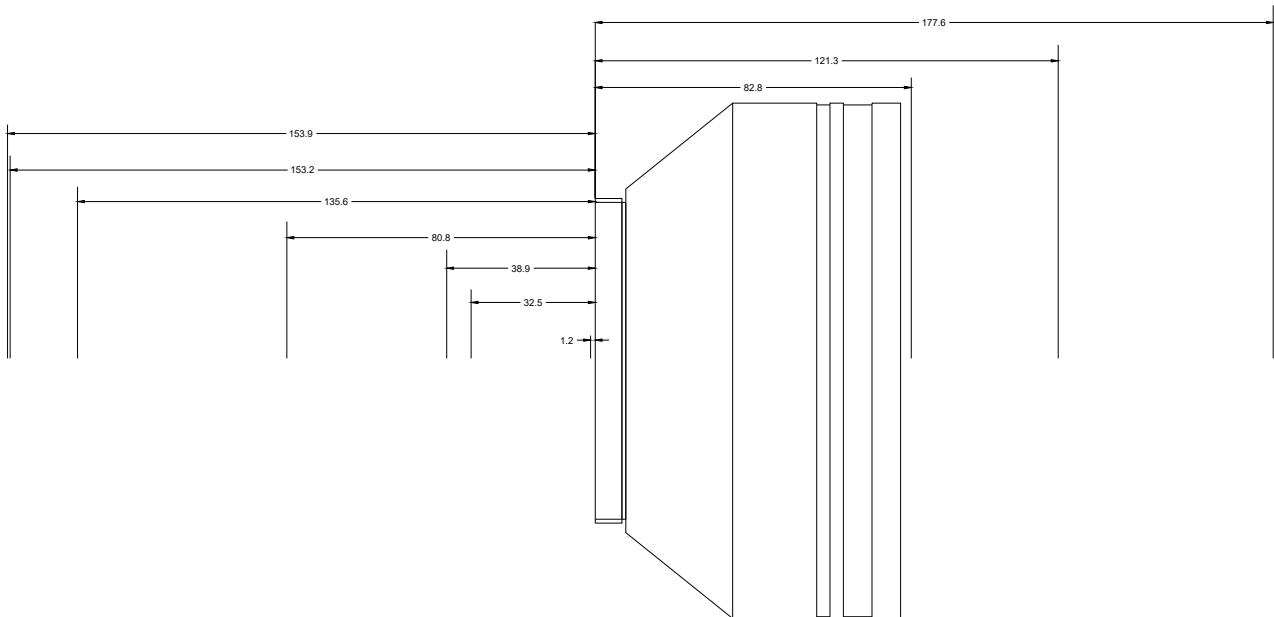
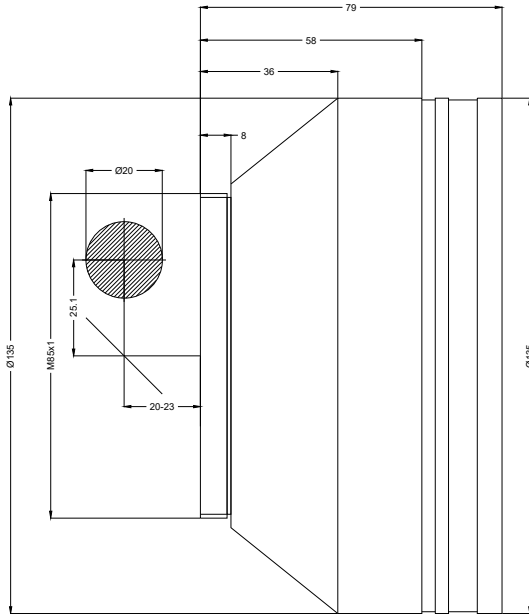


Wavelength	1030 – 1080 nm
Nominal focal length	480 mm
Effective focal length	480.047 mm
Flange focal length	645.743 mm
Working distance	574.743 mm
Max. scan field	280 x 280 mm
Minimum spot size	46.73 μ m

Mirror distance m1/m2	25.12 / 20 – 23 mm
Anti-reflective coating	Standard
Cooling method	Air
Lens material	Fused silica
Mounting thread	M85x1
Lens diameter	135 mm

Information is subject to change without notice. Product photos are non-binding and may show customized features.





F-Theta lens

f-480-20-1030-1080

Dimensions are given in millimeters and are intended as reference values.
Binding information is available on request.

