

F - T H E T A L E N S

# f-500-30-1030-1080-M112

en | Data sheet | 1.1

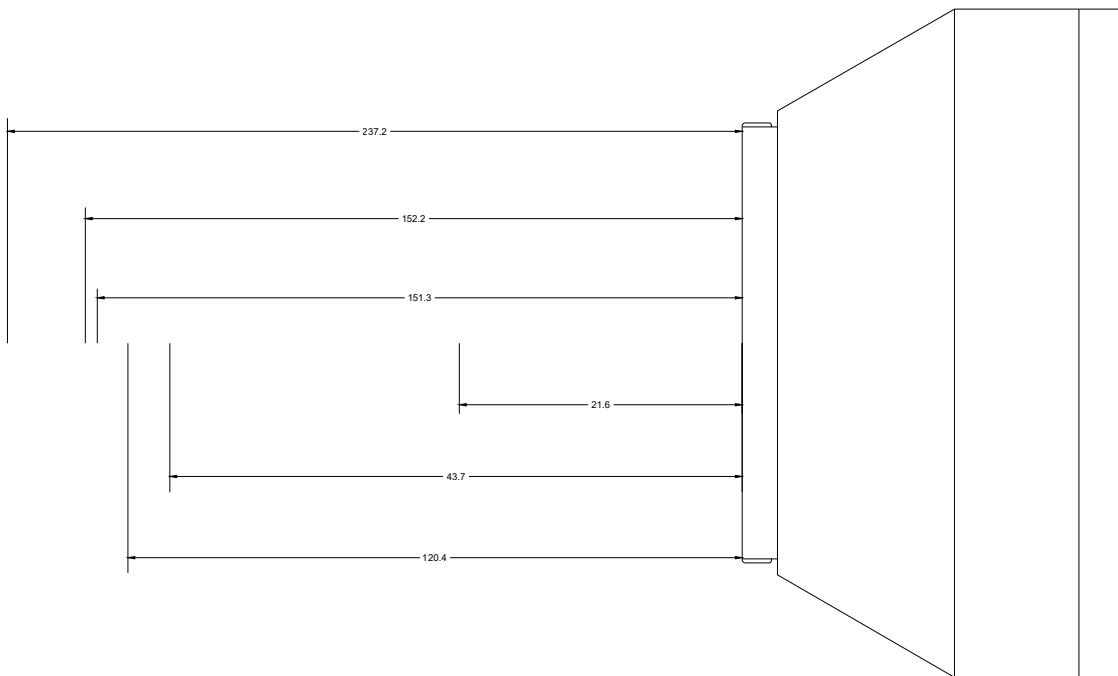
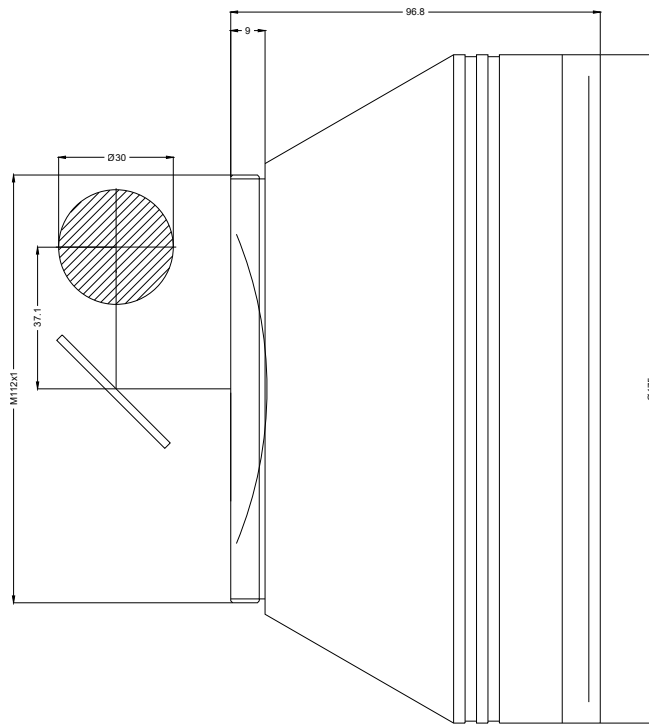
- Fused silica lens, 1030 – 1080 nm
- Nominal focal length 500 mm
- Max. input beam diameter 30 mm
- Maximum working area 300 x 300 mm



Wavelength	1030 – 1080 nm	Minimum spot size	32.45 µm
Nominal focal length	500 mm	Mirror distance m1/m2	37.12 / 30 mm
Effective focal length	500.000 mm	Anti-reflective coating	Standard
Flange focal length	711.225 mm	Cooling method	Air
Max. input beam diameter	30 mm	Lens material	Fused silica
Working distance	623.425 mm	Mounting thread	M112x1
Max. scan field	300 x 300 mm	Lens diameter	175 mm

Information is subject to change without notice.  
Product photos are non-binding and may show customized features.





F-Theta lens

f-500-30-1030-1080-M112

Dimensions are given in millimeters and are intended as reference values.  
Binding information is available on request.

