

F - T H E T A L E N S

f-750-30-1030-1080-M102

en | Data sheet | 1.1

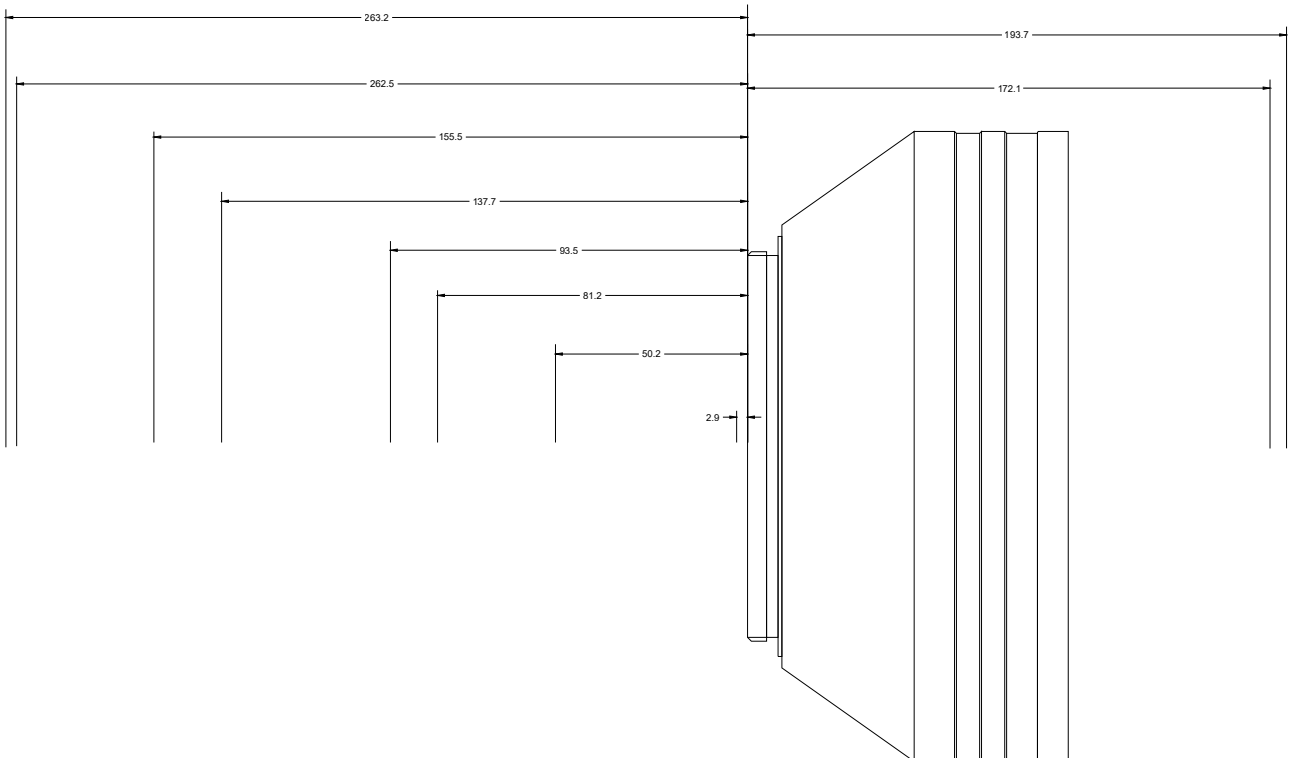
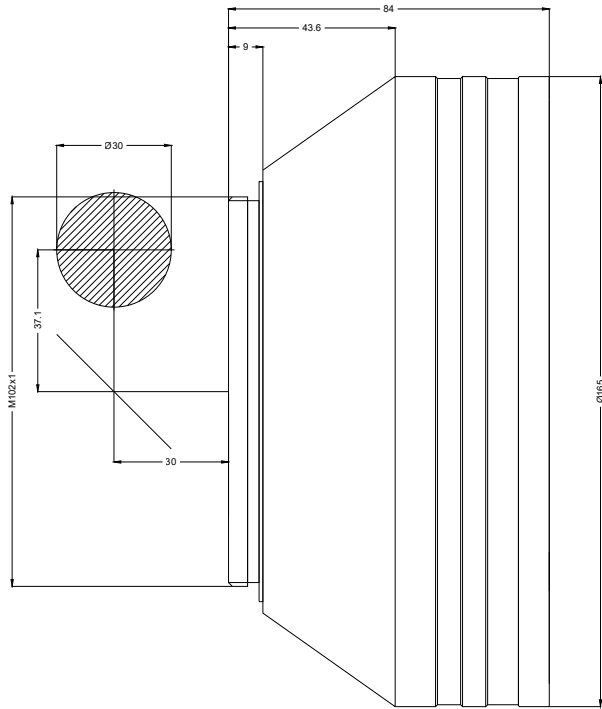
- Fused silica lens, 1030 – 1080 nm
- Nominal focal length 750 mm
- Max. input beam diameter 30 mm
- Maximum working area 440 x 440 mm



Wavelength	1030 – 1080 nm	Minimum spot size	48.68 µm
Nominal focal length	750 mm	Mirror distance m1/m2	37.12 / 30 – 35 mm
Effective focal length	750.042 mm	Anti-reflective coating	Standard
Flange focal length	964.527 mm	Cooling method	Air
Max. input beam diameter	30 mm	Lens material	Fused silica
Working distance	888.527 mm	Mounting thread	M102x1
Max. scan field	440 x 440 mm	Lens diameter	165 mm

Information is subject to change without notice.
Product photos are non-binding and may show customized features.





F-Theta lens

f-750-30-1030-1080-M102

Dimensions are given in millimeters and are intended as reference values.
Binding information is available on request.

