

F - T H E T A L E N S

f-100K-10-10.6

en | Data sheet | 1.2

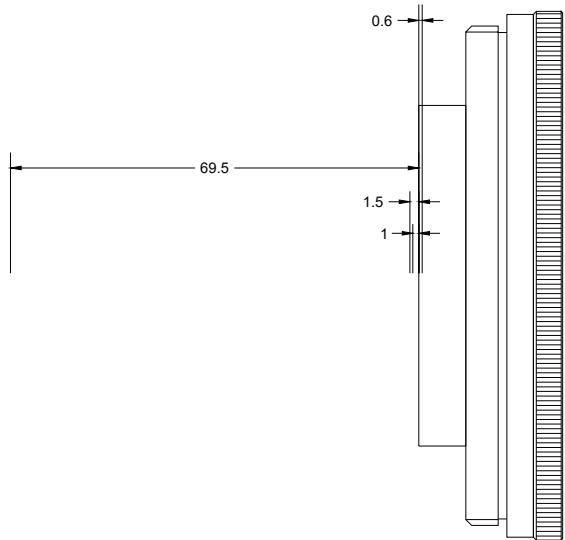
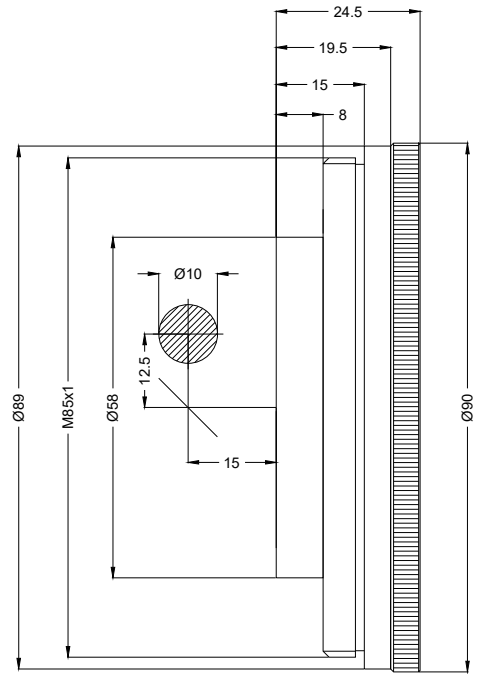
- F-Theta Lens 10600 nm, ZnSe
- Nominal focal length 100 mm
- Maximum input aperture 10 mm
- Maximum working area 60 x 60 mm



Wavelength	10600 nm	Mirror distance m1/m2	12.5 / 15 mm
Nominal focal length	100 mm	Anti-reflective coating	Standard
Effective focal length	100.009 mm	Cooling method	Air
Flange focal length	122.344 mm	Lens material	ZnSe
Working distance	112.844 mm	Mounting thread	M85x1
Max. scan field	60 x 60 mm	Lens diameter	90 mm
Minimum spot size	193.98 μ m		

Information is subject to change without notice.
Product photos are non-binding and may show customized features.





F-Theta lens

f-100K-10-10.6

Dimensions are given in millimeters and are intended as reference values.
Binding information is available on request.

