

F - T H E T A L E N S

f-600-30-10.6

en | Data sheet | 1.2

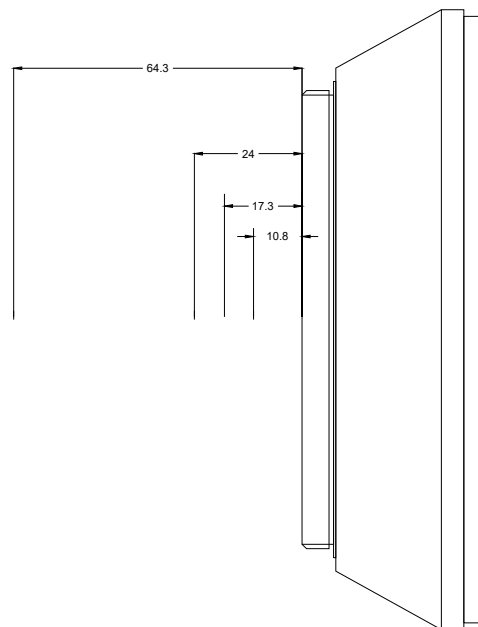
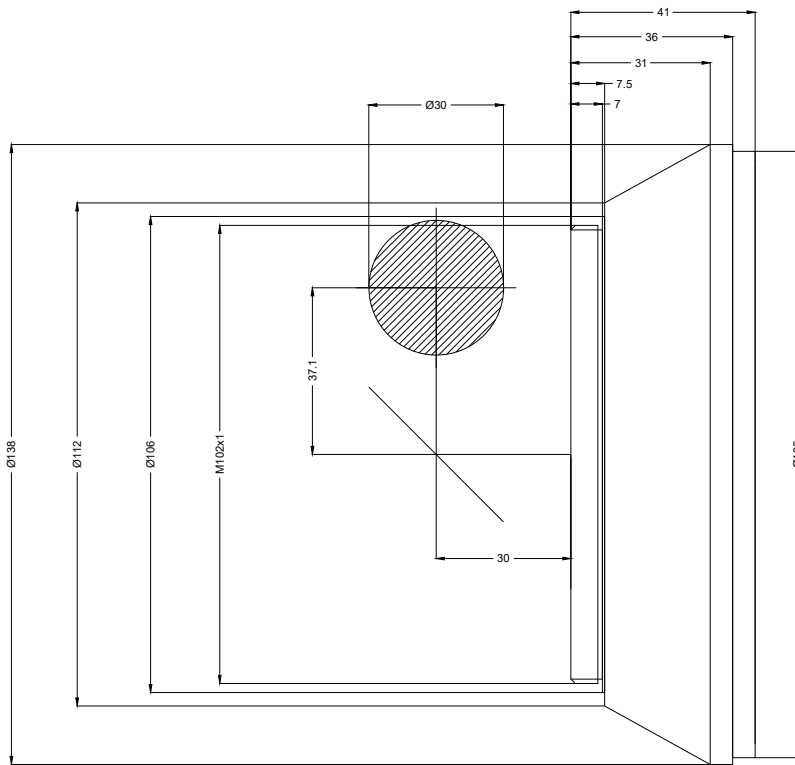
- F-Theta Lens 10600 nm, ZnSe
- Nominal focal length 600 mm
- Maximum input aperture 30 mm
- Maximum working area 410 x 410 mm



Wavelength	10600 nm	Mirror distance m1/m2	37.12 / 30 mm
Nominal focal length	600 mm	Anti-reflective coating	Standard
Effective focal length	598.248 mm	Cooling method	Air
Flange focal length	690.387 mm	Lens material	ZnSe
Working distance	656.387 mm	Mounting thread	M85x1
Max. scan field	410 x 410 mm	Lens diameter	120 mm
Minimum spot size	350 µm		

Information is subject to change without notice.
Product photos are non-binding and may show customized features.





F-Theta lens

f-600-30-10.6

Dimensions are given in millimeters and are intended as reference values.
Binding information is available on request.

