

F - T H E T A L E N S

# f-160-14-1064

en | Data sheet | 1.1

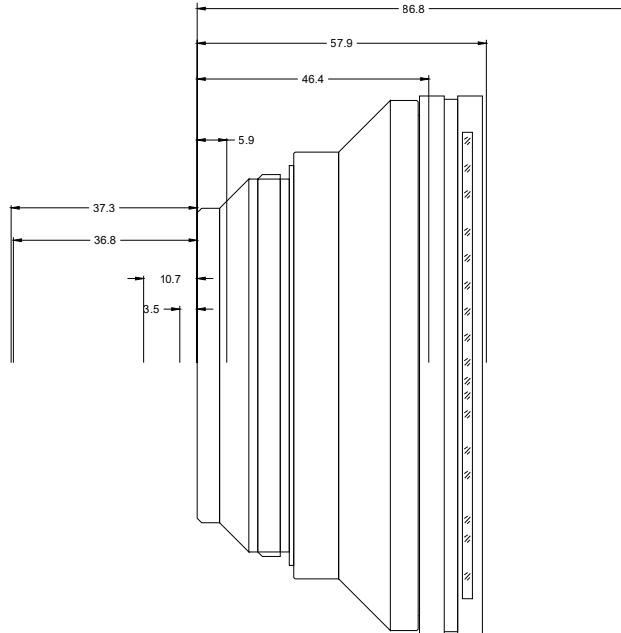
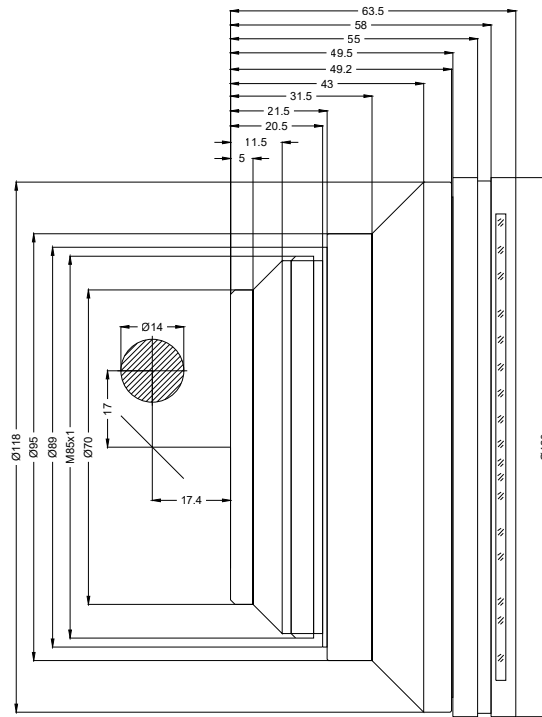
- F-Theta Focusing Lens, 1064 nm
- Nominal focal length 160 mm
- Max. input beam diameter 14 mm
- Maximum working area 110 x 110 mm



Wavelength	1064 nm	Minimum spot size	22.3 μm
Nominal focal length	160 mm	Mirror distance m1/m2	17 / 17.41 mm
Effective focal length	160.000 mm	Anti-reflective coating	Standard
Flange focal length	234.590 mm	Cooling method	Air
Max. input beam diameter	14 mm	Lens material	Optical glass
Working distance	191.590 mm	Mounting thread	M85x1
Max. scan field	110 x 110 mm	Lens diameter	120 mm

Information is subject to change without notice.  
Product photos are non-binding and may show customized features.





F-Theta lens

f-160-14-1064

Dimensions are given in millimeters and are intended as reference values.  
Binding information is available on request.

