

F - T H E T A L E N S

f-580-20-1064

en | Data sheet | 1.1

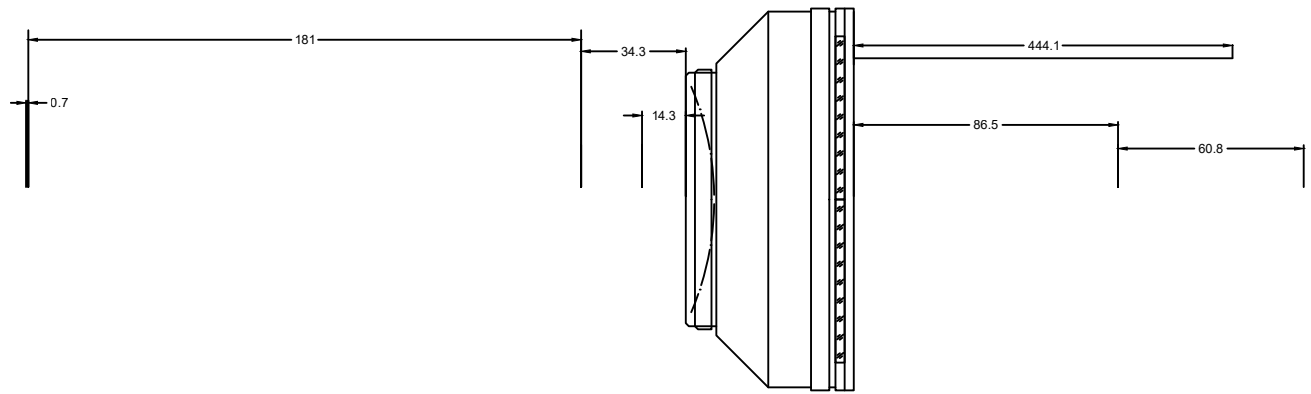
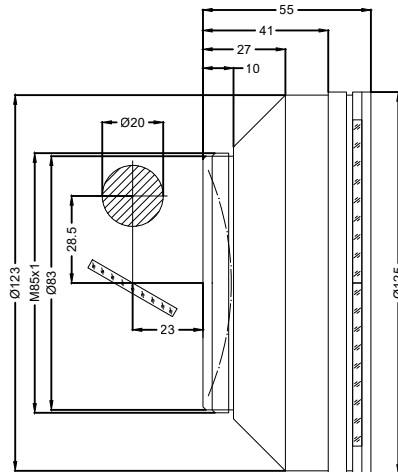
- F-Theta Focusing Lens, 1064 nm
- Nominal focal length 580 mm
- Max. input beam diameter 20 mm
- Maximum working area 400 x 400 mm



Wavelength	1064 nm	Minimum spot size	56.47 μm
Nominal focal length	580 mm	Mirror distance m1/m2	28.5 / 23 mm
Effective focal length	578.192 mm	Anti-reflective coating	Standard
Flange focal length	715.194 mm	Cooling method	Air
Max. input beam diameter	20 mm	Lens material	Optical glass
Working distance	670.194 mm	Mounting thread	M85x1
Max. scan field	400 x 400 mm	Lens diameter	125 mm

Information is subject to change without notice.
Product photos are non-binding and may show customized features.





F-Theta lens

f-580-20-1064

Dimensions are given in millimeters and are intended as reference values.
Binding information is available on request.

