

F - T H E T A L E N S

f-420-10-355

en | Data sheet | 1.0

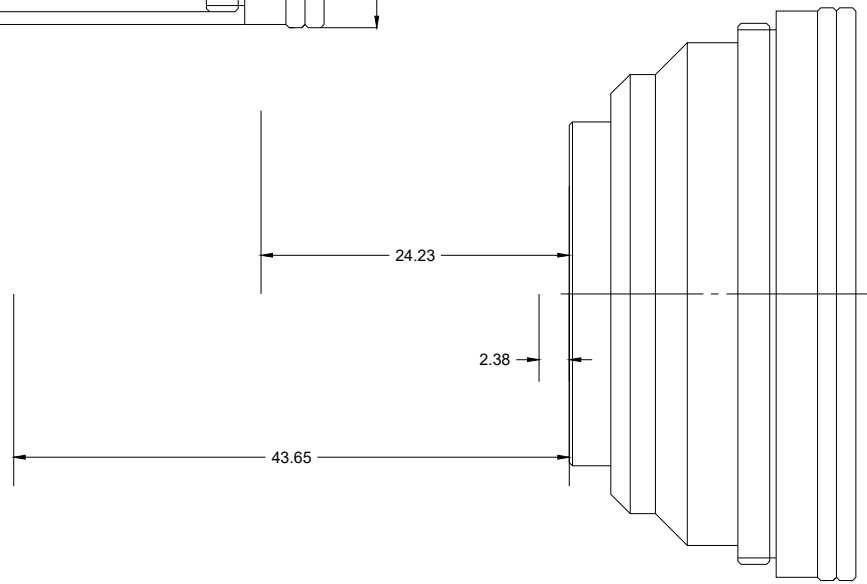
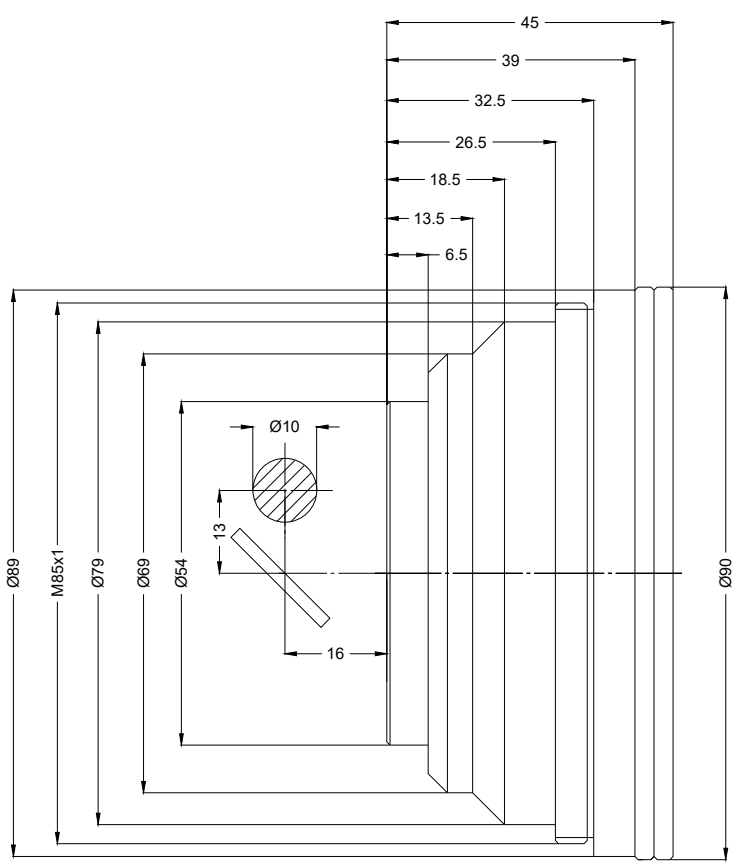
- Fused Silica F-Theta Lens, 355 nm
- Nominal focal length 420 mm
- Max. input beam diameter 10 mm
- Maximum working area 300 x 300 mm
- Fine focus, high power density



| | | | |
|--------------------------|--------------|-------------------------|---------------|
| Wavelength | 355 nm | Minimum spot size | 14.26 μ m |
| Nominal focal length | 420 mm | Mirror distance m1/m2 | 13 / 16 mm |
| Effective focal length | 420.000 mm | Anti-reflective coating | Standard |
| Flange focal length | 504.000 mm | Cooling method | Air |
| Max. input beam diameter | 10 mm | Lens material | Fused silica |
| Working distance | 491.500 mm | Mounting thread | M85x1 |
| Max. scan field | 300 x 300 mm | Lens diameter | 90 mm |

Information is subject to change without notice.
Product photos are non-binding and may show customized features.





F-Theta lens

f-420-10-355

Dimensions are given in millimeters and are intended as reference values.
Binding information is available on request.

