

F - T H E T A L E N S

f-750-14-355

en | Data sheet | 1.1

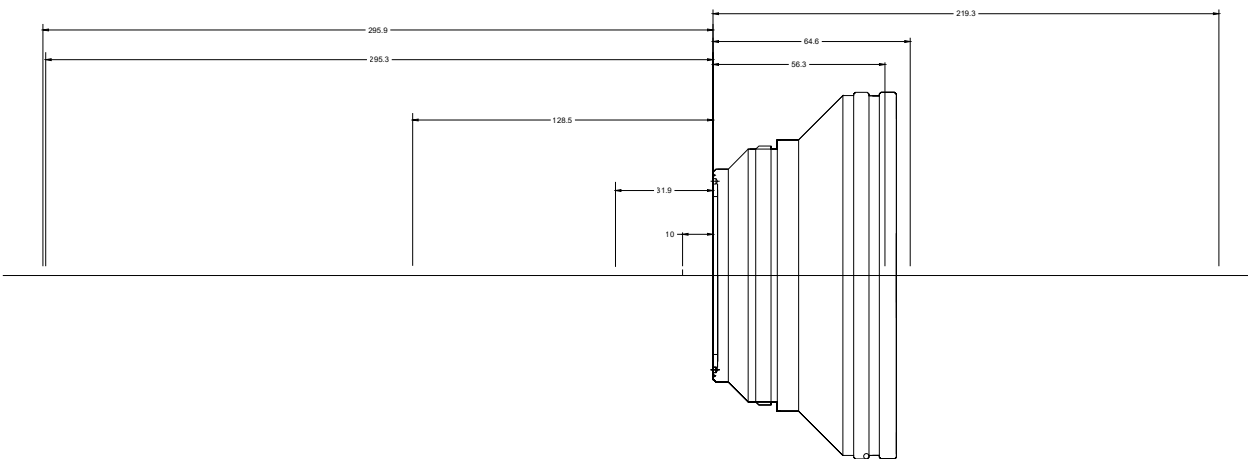
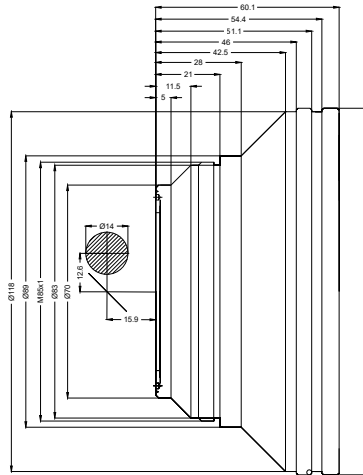
- Fused Silica F-Theta Lens, 355 nm
- Nominal focal length 750 mm
- Max. input beam diameter 14 mm
- Maximum working area 520 x 520 mm



Wavelength	355 nm	Minimum spot size	34.8 μm
Nominal focal length	750 mm	Mirror distance m1/m2	12.5 / 16 mm
Effective focal length	745.255 mm	Anti-reflective coating	Standard
Flange focal length	862.866 mm	Cooling method	Air
Max. input beam diameter	14 mm	Lens material	Fused silica
Working distance	823.366 mm	Mounting thread	M85x1
Max. scan field	520 x 520 mm	Lens diameter	120 mm

Information is subject to change without notice.
Product photos are non-binding and may show customized features.





F-Theta lens

f-750-14-355

Dimensions are given in millimeters and are intended as reference values.
Binding information is available on request.

