

F - T H E T A L E N S

f-375-10-405

en | Data sheet | 1.0

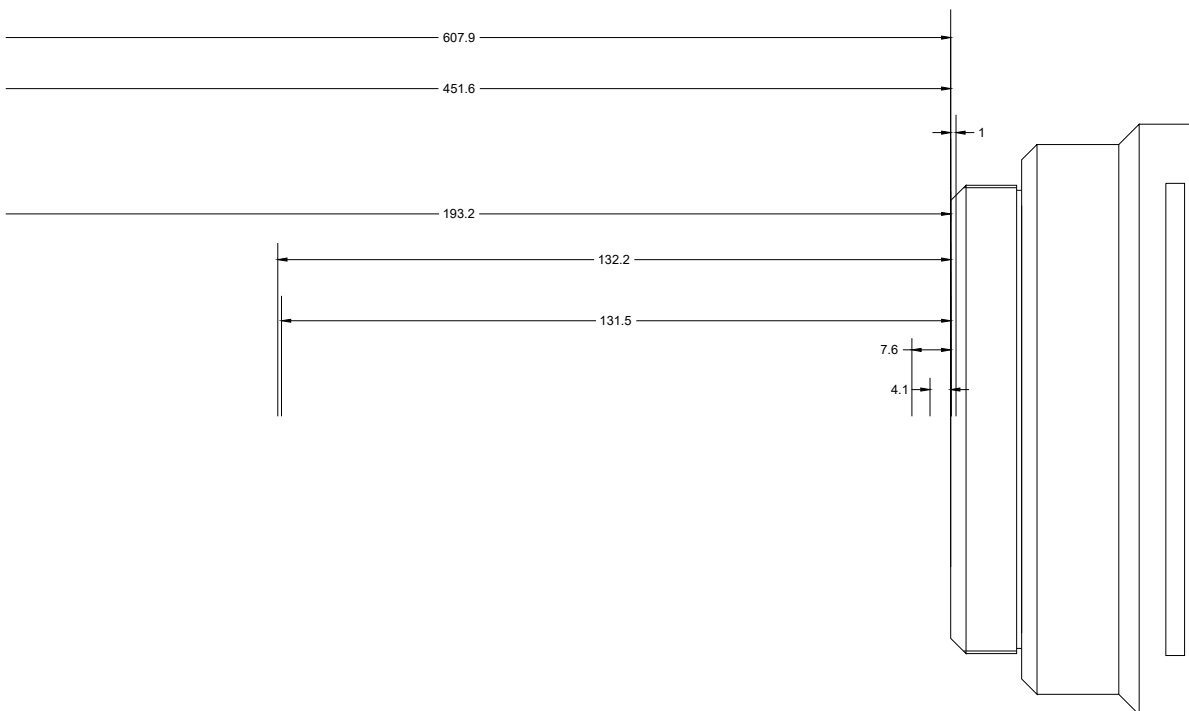
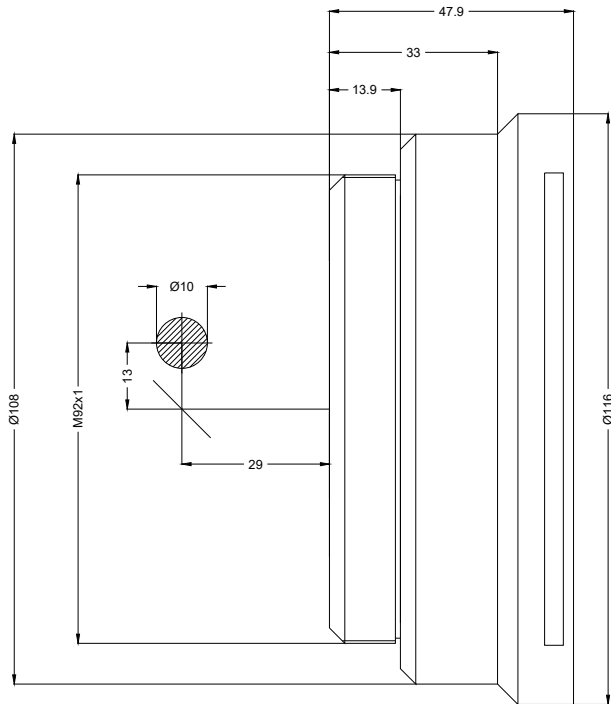
- Fused Silica F-Theta Lens, 405 nm
- Nominal focal length 375 mm
- Max. input beam diameter 10 mm
- Maximum working area 300 x 300 mm



Wavelength	405 nm	Minimum spot size	27.8 µm
Nominal focal length	375 mm	Mirror distance m1/m2	13 / 29 mm
Effective focal length	375.420 mm	Anti-reflective coating	Standard
Flange focal length	464.890 mm	Cooling method	Air
Max. input beam diameter	10 mm	Lens material	Fused silica
Working distance	430.890 mm	Mounting thread	M92x1
Max. scan field	300 x 300 mm	Lens diameter	116 mm

Information is subject to change without notice.
Product photos are non-binding and may show customized features.





F-Theta lens

f-375-10-405

Dimensions are given in millimeters and are intended as reference values.
Binding information is available on request.

