

F - T H E T A L E N S

f-750-15-405

en | Data sheet | 1.1

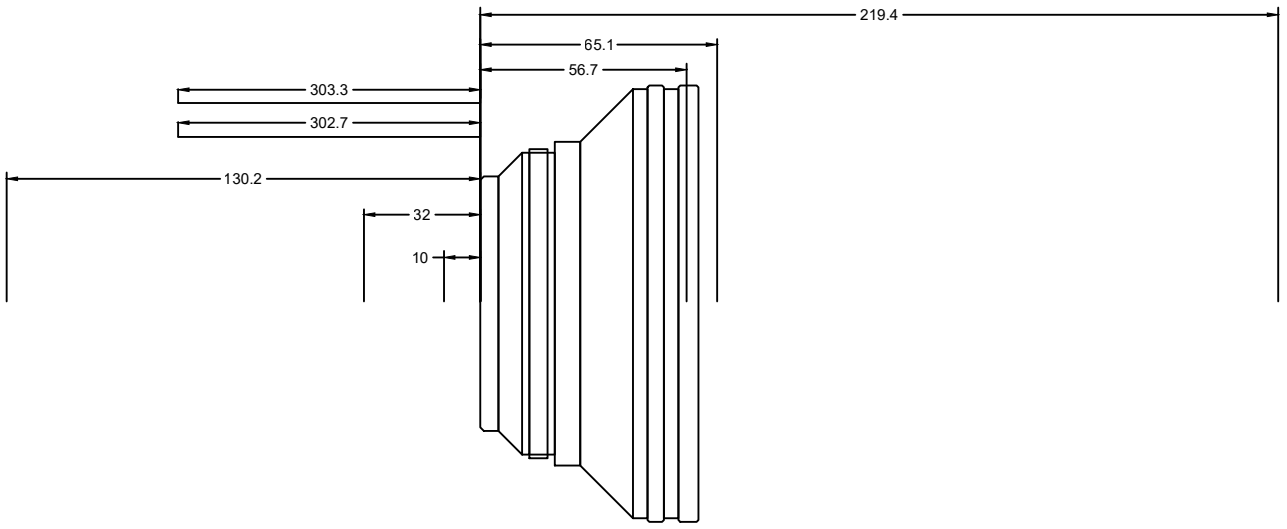
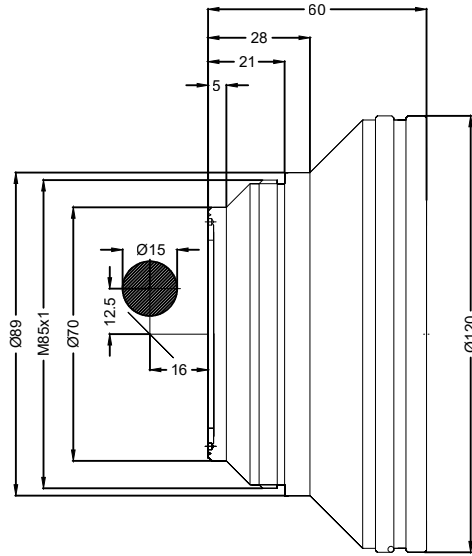
- Fused Silica F-Theta Lens, 405 nm
- Nominal focal length 750 mm
- Max. input beam diameter 15 mm
- Maximum working area 520 x 520 mm



Wavelength	405 nm	Minimum spot size	37.06 μm
Nominal focal length	750 mm	Mirror distance m1/m2	12.5 / 16 mm
Effective focal length	761.420 mm	Anti-reflective coating	Standard
Flange focal length	879.029 mm	Cooling method	Air
Max. input beam diameter	15 mm	Lens material	Fused silica
Working distance	839.529 mm	Mounting thread	M85x1
Max. scan field	520 x 520 mm	Lens diameter	120 mm

Information is subject to change without notice.
Product photos are non-binding and may show customized features.





F-Theta lens

f-750-15-405

Dimensions are given in millimeters and are intended as reference values.
Binding information is available on request.

