

F - T H E T A L E N S

# f-840-14-405

en | Data sheet | 1.1

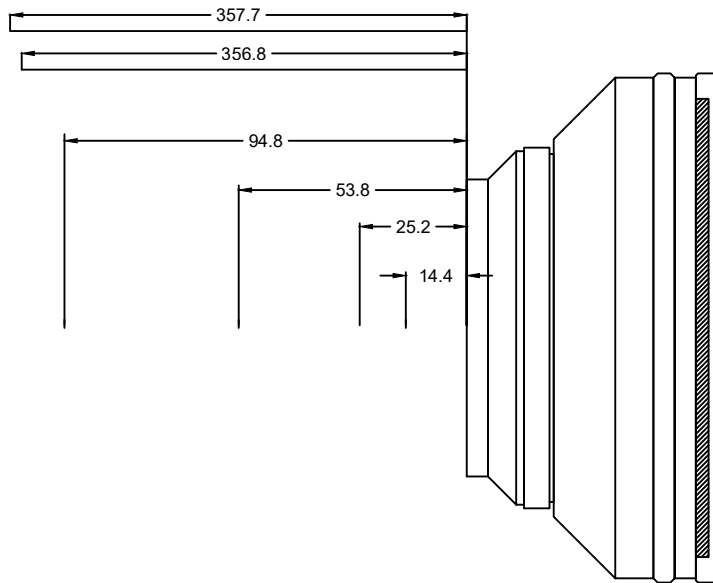
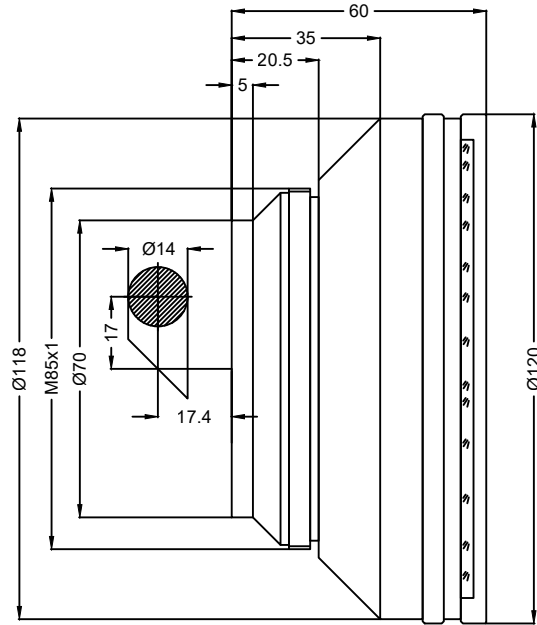
- Fused Silica F-Theta Lens, 405 nm
- Nominal focal length 840 mm
- Max. input beam diameter 14 mm
- Maximum working area 600 x 600 mm



Wavelength	405 nm	Minimum spot size	44.47 $\mu$ m
Nominal focal length	840 mm	Mirror distance m1/m2	17 / 17.4 mm
Effective focal length	840.000 mm	Anti-reflective coating	Standard
Flange focal length	953.119 mm	Cooling method	Air
Max. input beam diameter	14 mm	Lens material	Fused silica
Working distance	913.619 mm	Mounting thread	M85x1
Max. scan field	600 x 600 mm	Lens diameter	120 mm

Information is subject to change without notice.  
Product photos are non-binding and may show customized features.





F-Theta lens

f-840-14-405

Dimensions are given in millimeters and are intended as reference values.  
Binding information is available on request.

