

F - T H E T A L E N S

f-345-14-510-550

en | Data sheet | 1.1

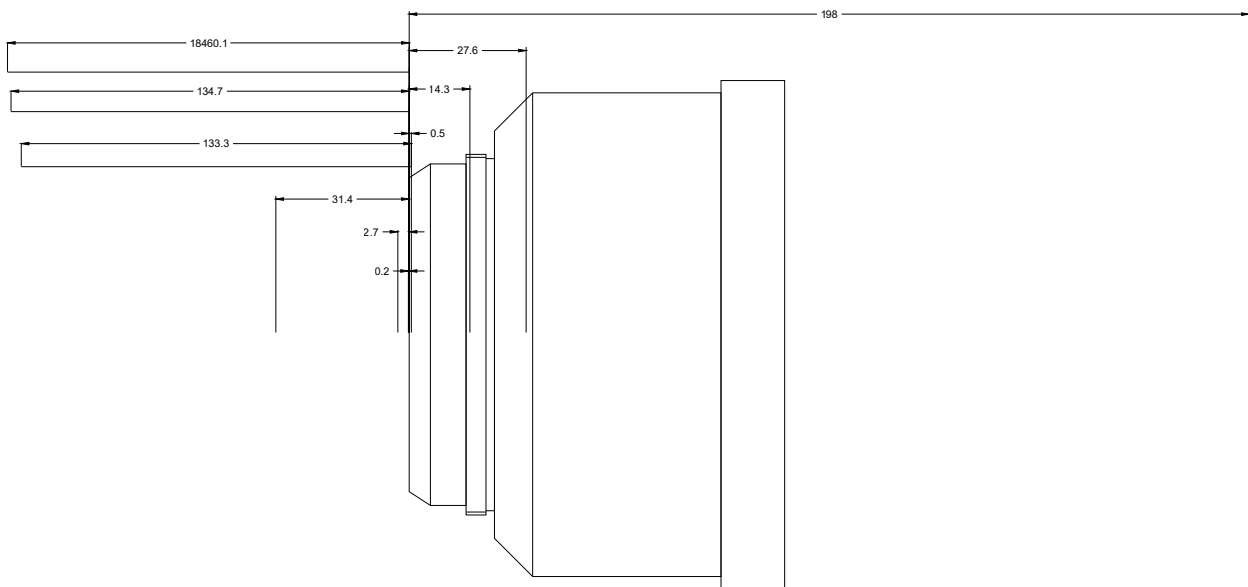
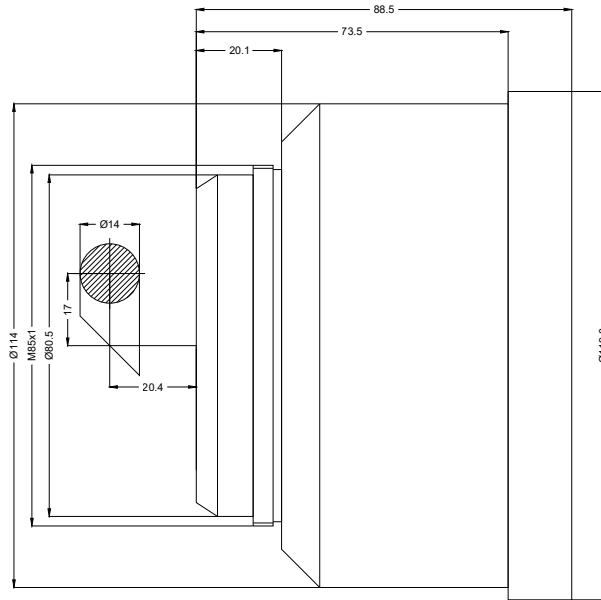
- Fused Silica F-Theta Lens, 510 – 550 nm
- Nominal focal length 345 mm
- Max. input beam diameter 14 mm
- Maximum working area 245 x 245 mm



Wavelength	510 – 550 nm	Minimum spot size	23.99 µm
Nominal focal length	345 mm	Mirror distance m1/m2	17 / 20.4 mm
Effective focal length	349.966 mm	Anti-reflective coating	Standard
Flange focal length	362.867 mm	Cooling method	Air
Max. input beam diameter	14 mm	Lens material	Fused silica
Working distance	294.467 mm	Mounting thread	M85x1
Max. scan field	245 x 245 mm	Lens diameter	120 mm

Information is subject to change without notice.
Product photos are non-binding and may show customized features.





F-Theta lens

f-345-14-510-550

Dimensions are given in millimeters and are intended as reference values.
Binding information is available on request.

