

F - T H E T A L E N S

f-420-16-510-550

en | Data sheet | 1.1

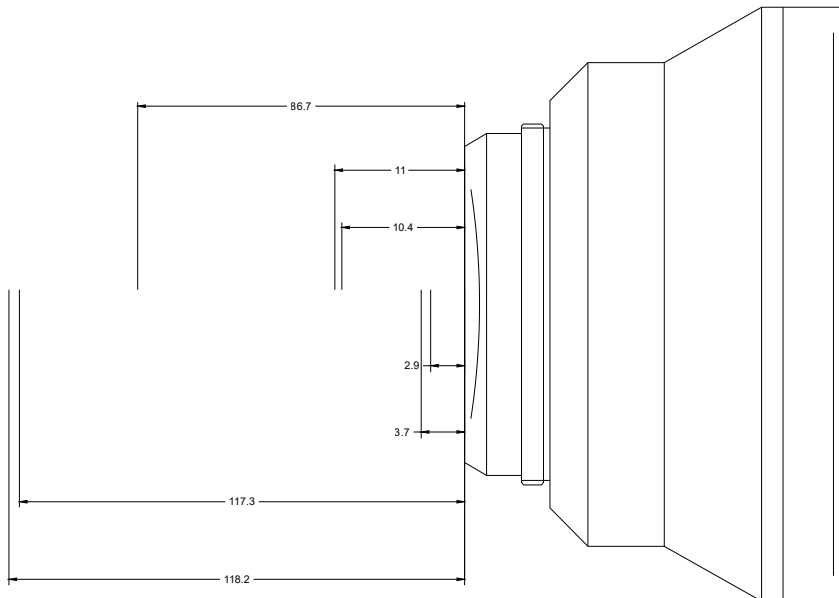
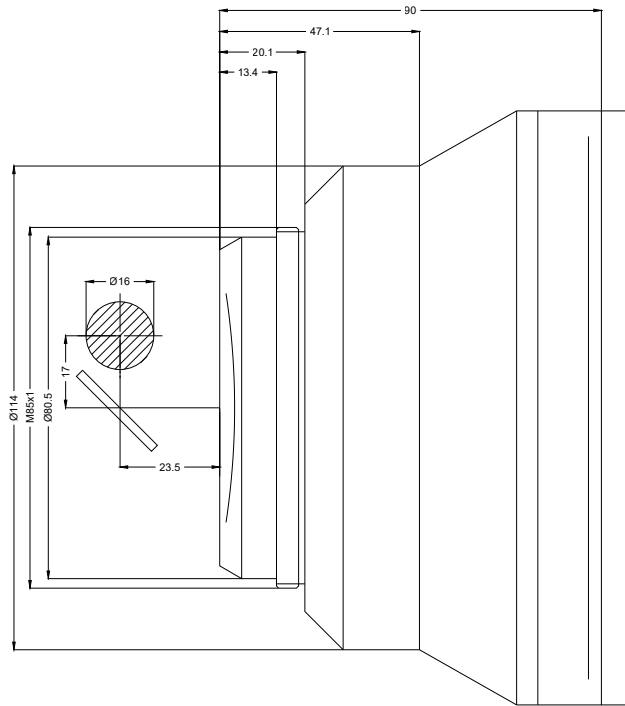
- Fused Silica F-Theta Lens, 510 – 550 nm
- Nominal focal length 420 mm
- Max. input beam diameter 16 mm
- Maximum working area 250 x 250 mm



Wavelength	510 – 550 nm	Minimum spot size	25.56 µm
Nominal focal length	420 mm	Mirror distance m1/m2	17 / 23.5 mm
Effective focal length	420.000 mm	Anti-reflective coating	Standard
Flange focal length	597.679 mm	Cooling method	Air
Max. input beam diameter	16 mm	Lens material	Fused silica
Working distance	527.779 mm	Mounting thread	M85x1
Max. scan field	250 x 250 mm	Lens diameter	140 mm

Information is subject to change without notice.
Product photos are non-binding and may show customized features.





F-Theta lens

f-420-16-510-550

Dimensions are given in millimeters and are intended as reference values.
Binding information is available on request.

