

F - T H E T A L E N S

# f-420-30-510-550-M120

en | Data sheet | 1.0

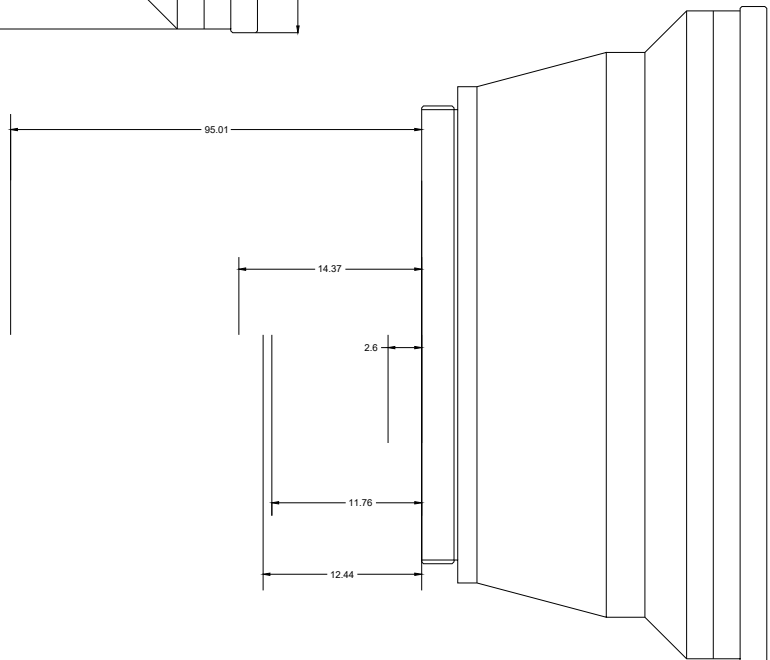
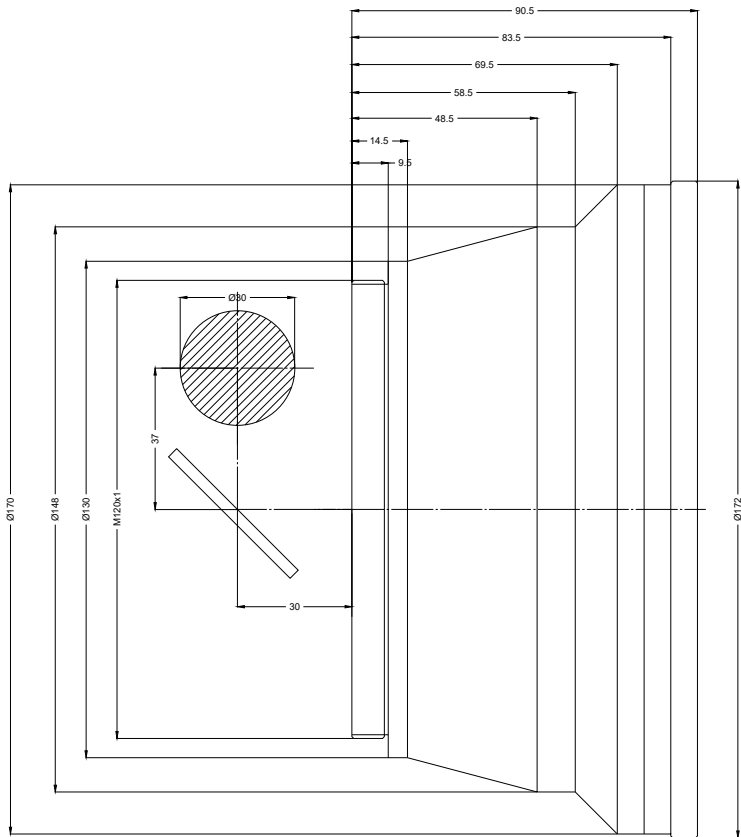
- Fused Silica F-Theta Lens, 510 – 550 nm
- Nominal focal length 450 mm
- Max. input beam diameter 14 mm
- Maximum working area 200 x 200 mm



|                          |              |                         |              |
|--------------------------|--------------|-------------------------|--------------|
| Wavelength               | 510 – 550 nm | Minimum spot size       | 7.21 $\mu$ m |
| Nominal focal length     | 420 mm       | Mirror distance m1/m2   | 37 / 30 mm   |
| Effective focal length   | 420.000 mm   | Anti-reflective coating | Standard     |
| Flange focal length      | 608.300 mm   | Cooling method          | Air          |
| Max. input beam diameter | 30 mm        | Lens material           | Fused silica |
| Working distance         | 527.300 mm   | Mounting thread         | M120x1       |
| Max. scan field          | 200 x 200 mm | Lens diameter           | 172 mm       |

Information is subject to change without notice.  
Product photos are non-binding and may show customized features.





F-Theta lens

f-420-30-510-550-M120

Dimensions are given in millimeters and are intended as reference values.  
Binding information is available on request.

