

F - T H E T A L E N S

f-330-16-532

en | Data sheet | 1.1

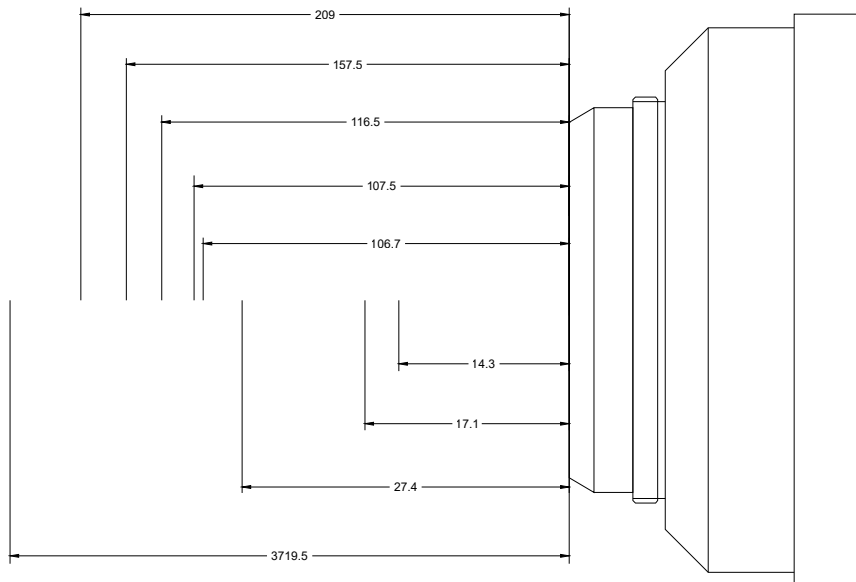
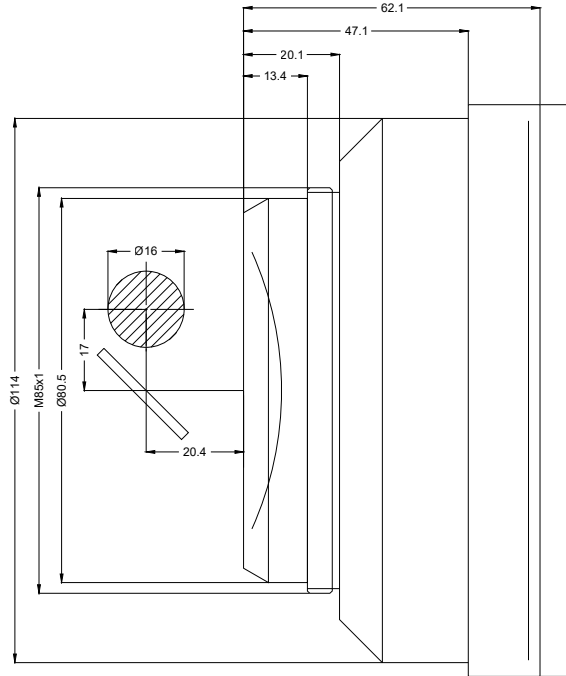
- F-Theta Focusing Lens, 532 nm
- Nominal focal length 330 mm
- Max. input beam diameter 16 mm
- Maximum working area 245 x 245 mm



Wavelength	532 nm	Minimum spot size	20.08 μ m
Nominal focal length	330 mm	Mirror distance m1/m2	17 / 20.4 mm
Effective focal length	330.000 mm	Anti-reflective coating	Standard
Flange focal length	430.600 mm	Cooling method	Air
Max. input beam diameter	16 mm	Lens material	Optical glass and fused silica
Working distance	384.316 mm	Mounting thread	M85x1
Max. scan field	245 x 245 mm	Lens diameter	120 mm

Information is subject to change without notice.
Product photos are non-binding and may show customized features.





F-Theta lens

f-330-16-532

Dimensions are given in millimeters and are intended as reference values.
Binding information is available on request.

