

F - T H E T A L E N S

f-480-15-532

en | Data sheet | 1.1

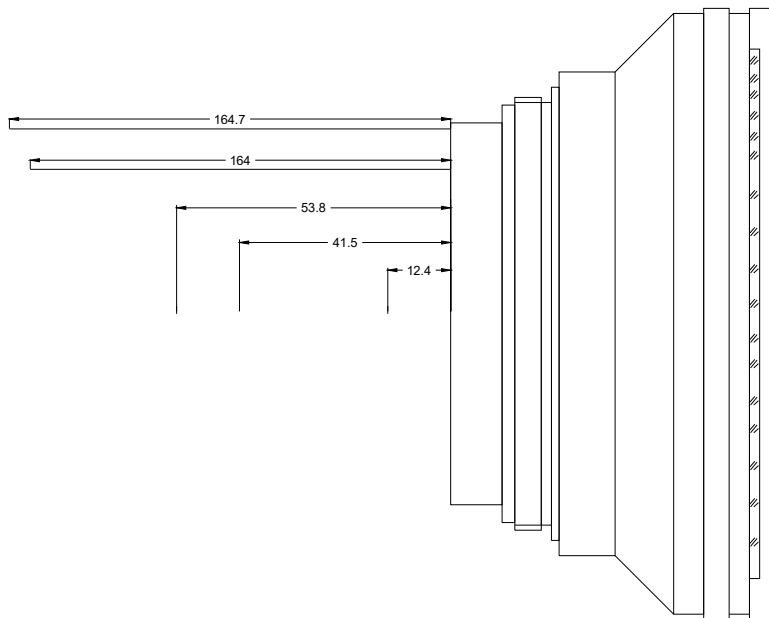
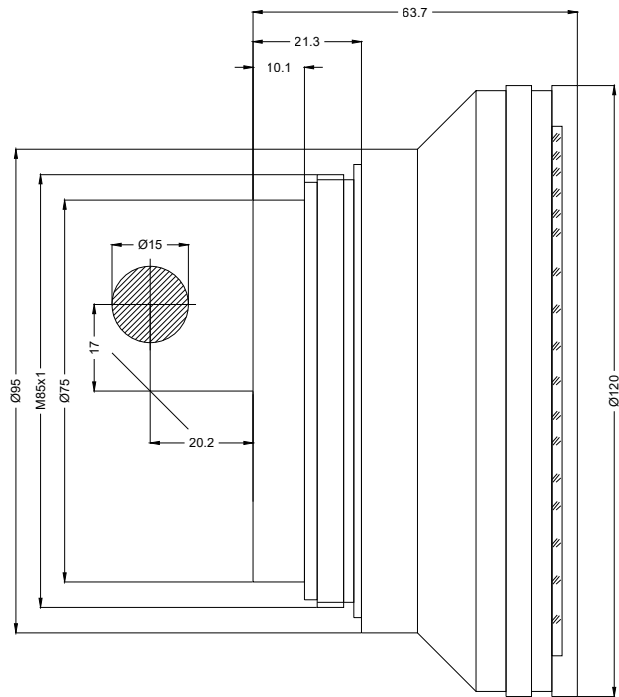
- F-Theta Focusing Lens, 532 nm
- Nominal focal length 480 mm
- Max. input beam diameter 15 mm
- Maximum working area 319 x 319 mm



Wavelength	532 nm	Minimum spot size	31.15 µm
Nominal focal length	480 mm	Mirror distance m1/m2	17 / 20.2 mm
Effective focal length	480.000 mm	Anti-reflective coating	Standard
Flange focal length	617.000 mm	Cooling method	Air
Max. input beam diameter	15 mm	Lens material	Optical glass
Working distance	565.000 mm	Mounting thread	M85x1
Max. scan field	319 x 319 mm	Lens diameter	120 mm

Information is subject to change without notice.
Product photos are non-binding and may show customized features.





F-Theta lens

f-480-15-532

Dimensions are given in millimeters and are intended as reference values.
Binding information is available on request.

