

F - T H E T A L E N S

f-210-30-915-980-M112

en | Data sheet | 1.0

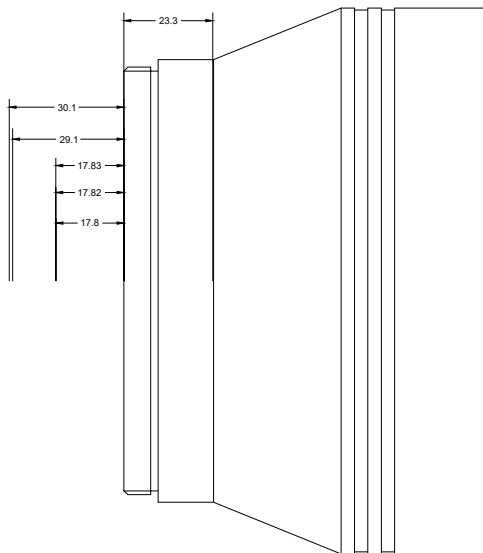
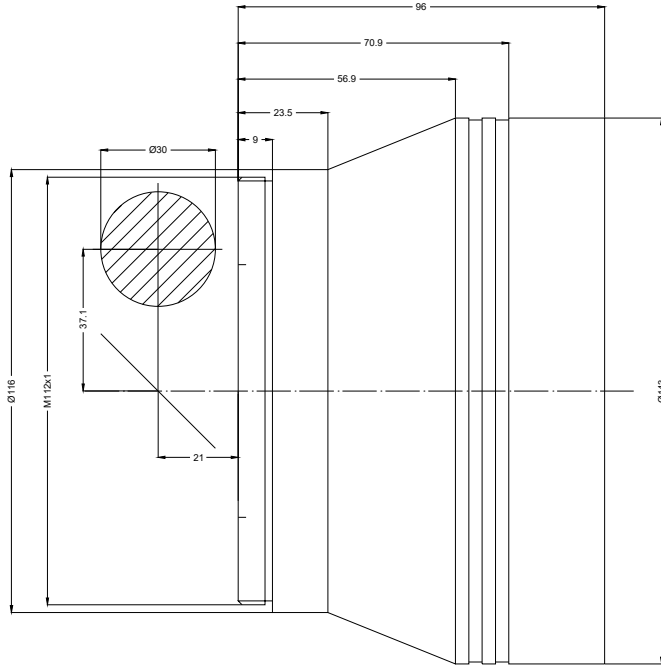
- Fused Silica F-Theta Lens, 915 – 980 nm
- Nominal focal length 210 mm
- Max. input beam diameter 30 mm
- Maximum working area 100 x 100 mm



Wavelength	915 – 980 nm	Minimum spot size	18 µm
Nominal focal length	210 mm	Mirror distance m1/m2	37.12 / 21 mm
Effective focal length	210.000 mm	Anti-reflective coating	Standard
Flange focal length	354.658 mm	Cooling method	Air
Max. input beam diameter	30 mm	Lens material	Fused silica
Working distance	267.658 mm	Mounting thread	M112x1
Max. scan field	100 x 100 mm	Lens diameter	143 mm

Information is subject to change without notice.
Product photos are non-binding and may show customized features.





F-Theta lens

f-210-30-915-980-M112

Dimensions are given in millimeters and are intended as reference values.
Binding information is available on request.

