

F - T H E T A L E N S

# f-255-20-915-980

en | Data sheet | 1.1

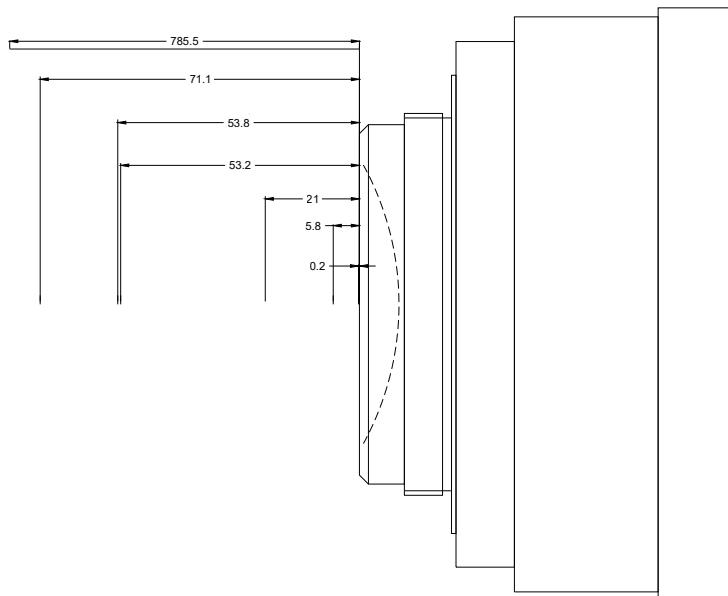
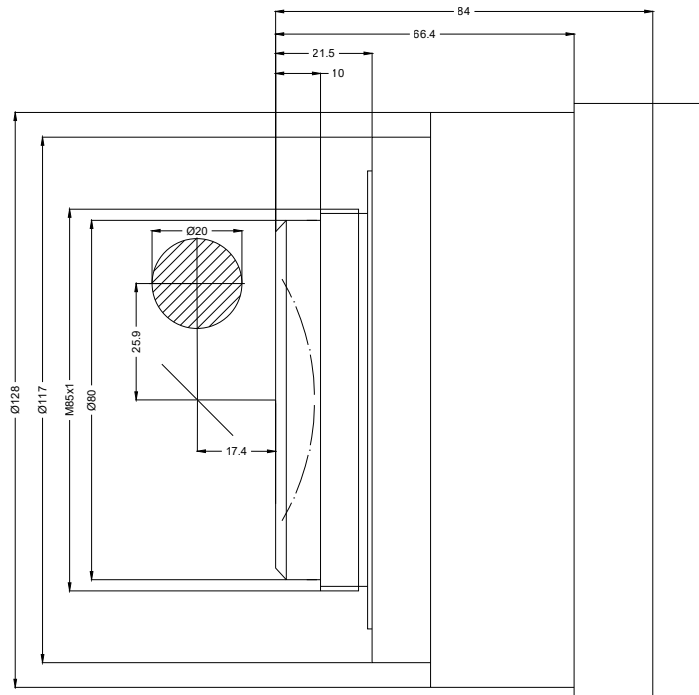
- Fused Silica F-Theta Lens, 915 – 980 nm
- Nominal focal length 255 mm
- Max. input beam diameter 20 mm
- Maximum working area 150 x 150 mm
- Very fine focus, high power density



|                          |              |                         |                |
|--------------------------|--------------|-------------------------|----------------|
| Wavelength               | 915 – 980 nm | Minimum spot size       | 22.8 µm        |
| Nominal focal length     | 255 mm       | Mirror distance m1/m2   | 25.9 / 17.4 mm |
| Effective focal length   | 255.000 mm   | Anti-reflective coating | Standard       |
| Flange focal length      | 379.890 mm   | Cooling method          | Air            |
| Max. input beam diameter | 20 mm        | Lens material           | Fused silica   |
| Working distance         | 316.370 mm   | Mounting thread         | M85x1          |
| Max. scan field          | 150 x 150 mm | Lens diameter           | 132 mm         |

Information is subject to change without notice.  
Product photos are non-binding and may show customized features.





F-Theta lens

f-255-20-915-980

Dimensions are given in millimeters and are intended as reference values.  
Binding information is available on request.

