

F - T H E T A L E N S

# f-100K-10-9.3

en | Data sheet | 1.1

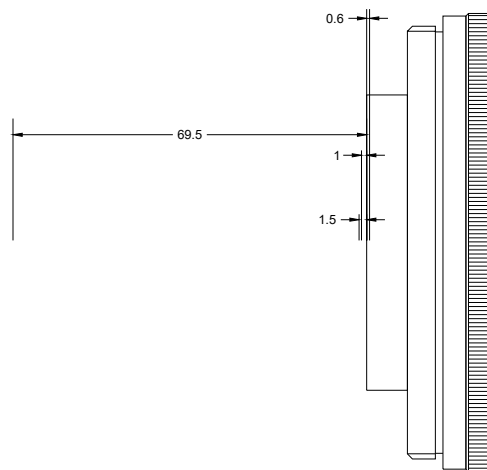
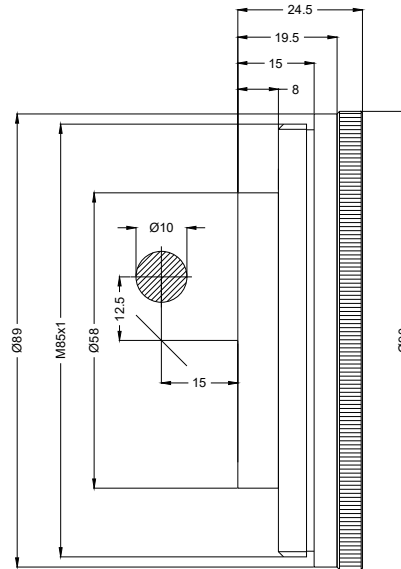
- F-Theta Lens 9300 nm, ZnSe
- Nominal focal length 100 mm
- Max. input beam diameter 10 mm
- Maximum working area 60 x 60 mm



|                          |            |                         |                |
|--------------------------|------------|-------------------------|----------------|
| Wavelength               | 9300 nm    | Minimum spot size       | 170.19 $\mu$ m |
| Nominal focal length     | 100 mm     | Mirror distance m1/m2   | 12.5 / 15 mm   |
| Effective focal length   | 100.009 mm | Anti-reflective coating | Standard       |
| Flange focal length      | 121.507 mm | Cooling method          | Air            |
| Max. input beam diameter | 10 mm      | Lens material           | ZnSe           |
| Working distance         | 112.007 mm | Mounting thread         | M85x1          |
| Max. scan field          | 60 x 60 mm | Lens diameter           | 90 mm          |

Information is subject to change without notice.  
Product photos are non-binding and may show customized features.





F-Theta lens

f-100K-10-9.3

Dimensions are given in millimeters and are intended as reference values.  
Binding information is available on request.

