

F - T H E T A L E N S

f-600-30-9.3

en | Data sheet | 1.1

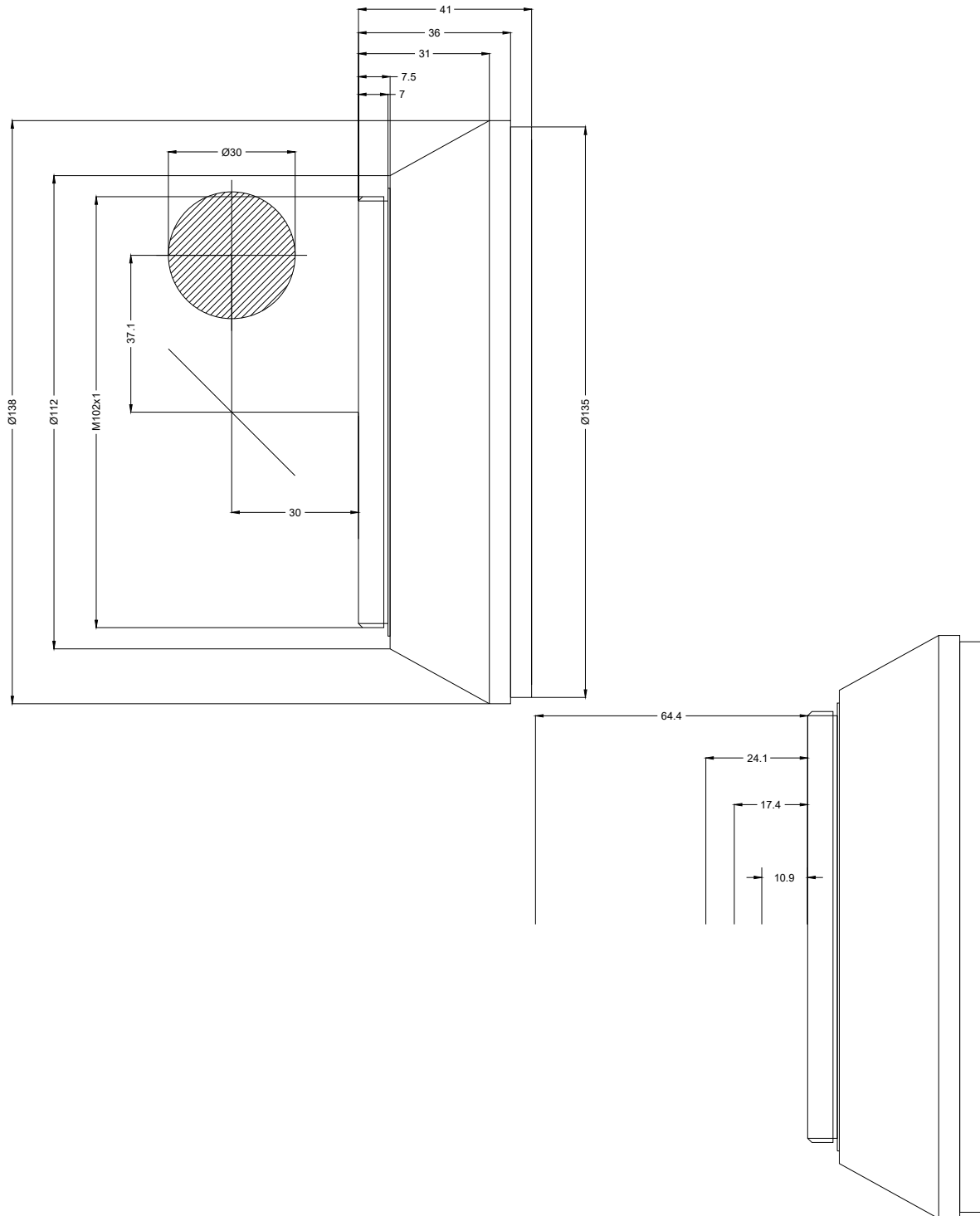
- F-Theta Lens 9300 nm, ZnSe
- Nominal focal length 600 mm
- Max. input beam diameter 30 mm
- Maximum working area 410 x 410 mm



Wavelength	9300 nm	Minimum spot size	340.38 µm
Nominal focal length	600 mm	Mirror distance m1/m2	37.12 / 30 mm
Effective focal length	598.248 mm	Anti-reflective coating	Standard
Flange focal length	685.351 mm	Cooling method	Air
Max. input beam diameter	30 mm	Lens material	ZnSe
Working distance	651.351 mm	Mounting thread	M102x1
Max. scan field	410 x 410 mm	Lens diameter	135 mm

Information is subject to change without notice.
Product photos are non-binding and may show customized features.





F-Theta lens

f-600-30-9.3

Dimensions are given in millimeters and are intended as reference values.
Binding information is available on request.

