

F - T H E T A L E N S

f-254-20-980

en | Data sheet | 1.0

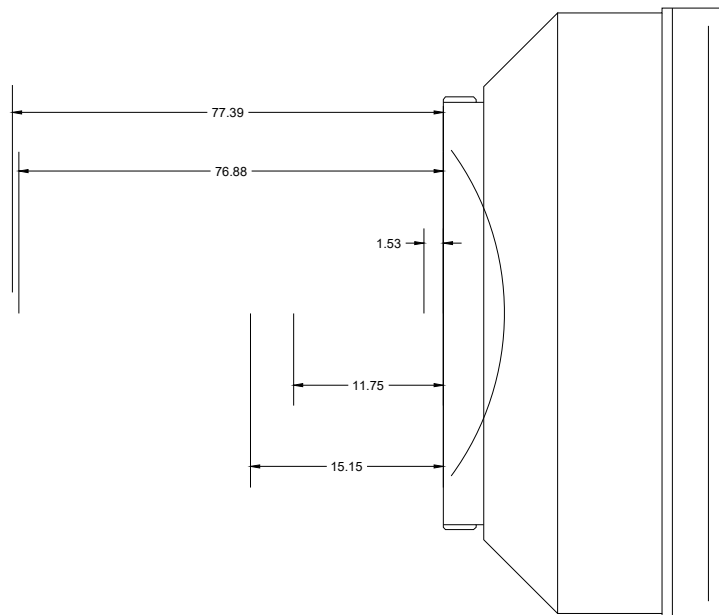
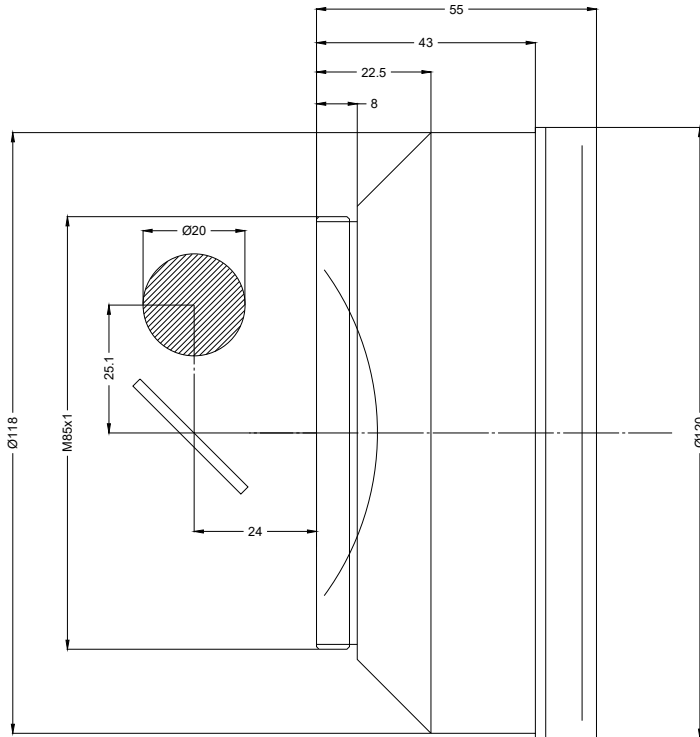
- F-Theta Focusing Lens, 980 nm
- Nominal focal length 254 mm
- Max. input beam diameter 20 mm
- Maximum working area 175 x 175 mm



Wavelength	980 nm	Minimum spot size	21.55 μ m
Nominal focal length	254 mm	Mirror distance m1/m2	25.12 / 24.05 mm
Effective focal length	254.000 mm	Anti-reflective coating	Standard
Flange focal length	359.917 mm	Cooling method	Air
Max. input beam diameter	20 mm	Lens material	Optical glass
Working distance	304.917 mm	Mounting thread	M85x1
Max. scan field	175 x 175 mm	Lens diameter	120 mm

Information is subject to change without notice.
Product photos are non-binding and may show customized features.





F-Theta lens

f-254-20-980

Dimensions are given in millimeters and are intended as reference values.
Binding information is available on request.

