

2 D SCAN HEAD

BS-20

en | Data sheet | 1.1.1

- 2-axis laser deflection unit, aperture 20 mm
- Laser power up to 2000 Watt, CW 1064 nm
- High precision for industrial use
- Outstanding cost-effectiveness



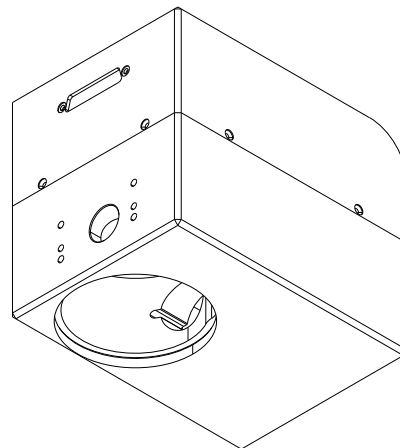
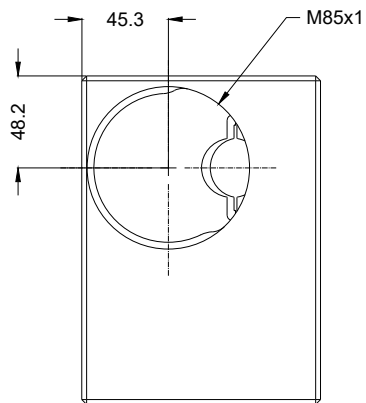
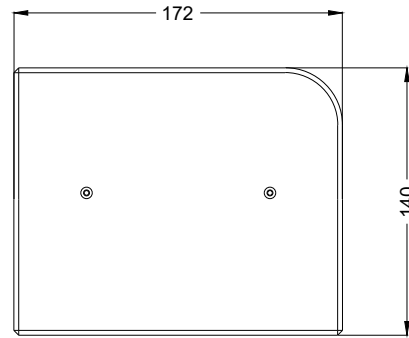
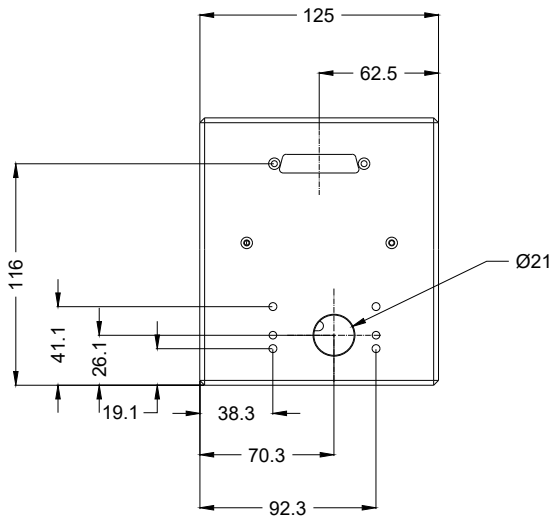
Wavelength	1064 nm ^[1]
Input beam diameter	20 mm
Tracking delay	0.38 ms
Writing speed	320 cps
Max. optical deflection	0.393 rad
Resolution	12 µrad
Repeatability (RMS)	22 µrad
Positioning noise (RMS)	4.5 µrad
Max. gain-drift per axis	50 ppm/K
Max. offset-drift per axis	30 µrad/K

Long-term-drift per axis (8 h)	300 µrad
Cooling method	Passive
Control interface	XY2-100-Standard
Humidity	80% ^[2]
Supply voltage DC	15 V
Current consumption	5 A
Operation temperature	10 – 40 °C
Storage temperature	-20 – 60 °C
Mechanical dimensions (W × D × H)	125 × 172 × 140 mm
Net weight	3 kg

^[1] Other available wavelengths: 355 / 450 / 532 / 10600 nm

^[2] Non condensing





2D scan head

BS-20

Dimensions are given in millimeters and are intended as reference values.
Binding information is available on request.

