

2 D SCAN HEAD

# PSH-10

en | Data sheet | 1.1

- Premium 2-axis laser scan head / 10 mm
- Highest precision with minimal drift
- Compact air-cooled design
- Designed for demanding laser applications

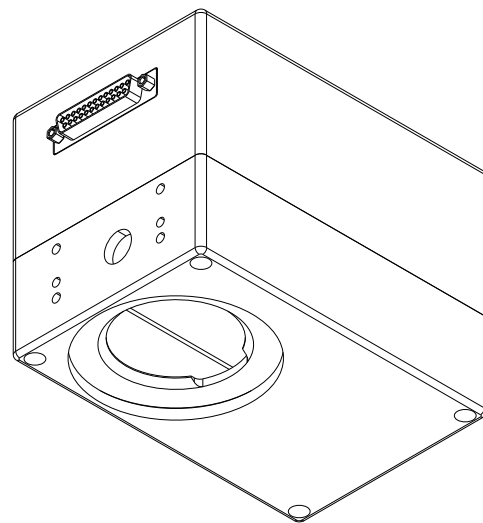
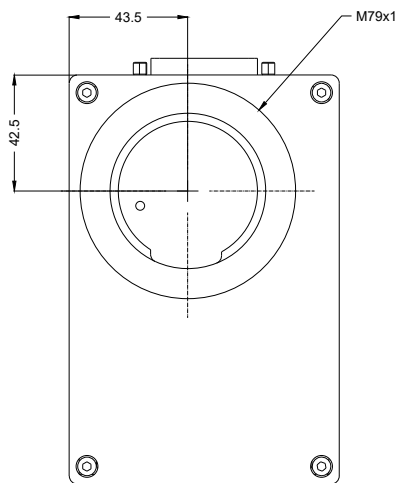
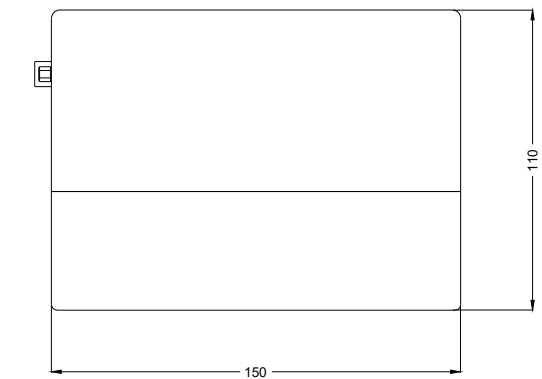
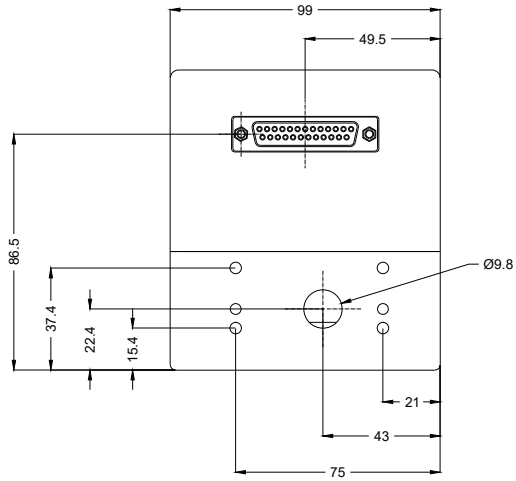


Wavelength	1030 - 1080 nm <sup>[1]</sup>	Long-term-drift per axis (8 h)	50 µrad
Input beam diameter	10 mm	Cooling method	Passive
Tracking delay	0.12 ms	Control interface	XY2-100-Standard
Writing speed	950 cps	Humidity	80% <sup>[2]</sup>
Max. optical deflection	0.418 rad	Supply voltage DC	15 V
Resolution	12 µrad	Current consumption	5 A
Repeatability (RMS)	2 µrad	Operation temperature	15 – 35 °C
Positioning noise (RMS)	2 µrad	Storage temperature	-10 – 60 °C
Max. gain-drift per axis	15 ppm/K	Mechanical dimensions (W × D × H)	99 × 150 × 110 mm
Max. offset-drift per axis	10 µrad/K	Net weight	2.8 kg

<sup>[1]</sup> Other available wavelengths: 355 / 532 / 10600 nm

<sup>[2]</sup> Non condensing





2D scan head

PSH-10

Dimensions are given in millimeters and are intended as reference values.  
Binding information is available on request.

