

2 D SCAN HEAD

PSH-14-A-RT

en | Data sheet | 1.0.1

- Premium 2-axis laser scan head / 14 mm
- Highest precision with minimal drift
- Compact and robust design
- For highly precise laser applications, such as resistor trimming



Wavelength	355 nm ^[1]
Input beam diameter	14 mm
Tracking delay	0.4 ms
Writing speed	300 cps ^[2]
Marking speed	1.2 mm/s
Max. optical deflection (\pm)	0.35 rad
Resolution	12 μ rad
Repeatability (RMS) (<)	2 μ rad
Max. gain-drift per axis	15 ppm/K
Max. offset-drift per axis	15 μ rad/K

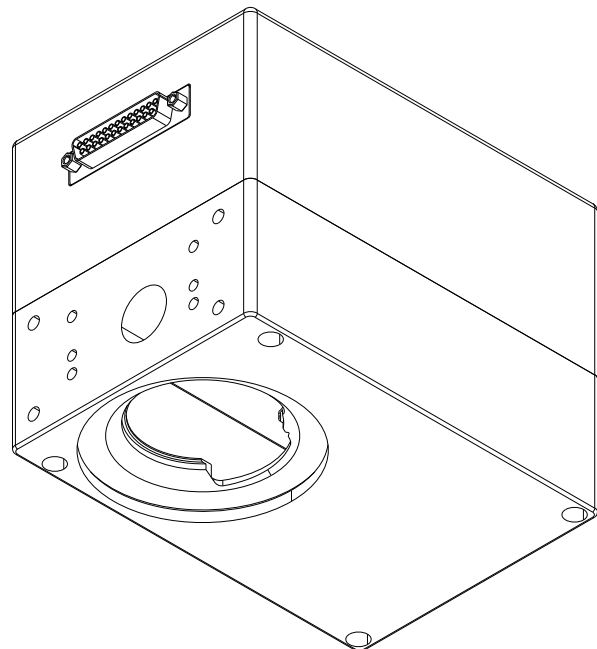
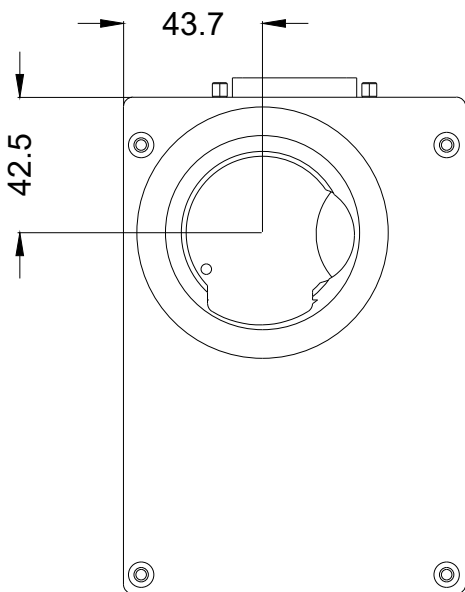
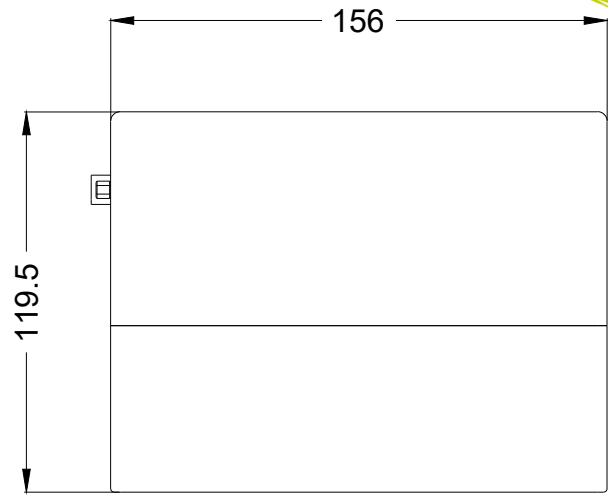
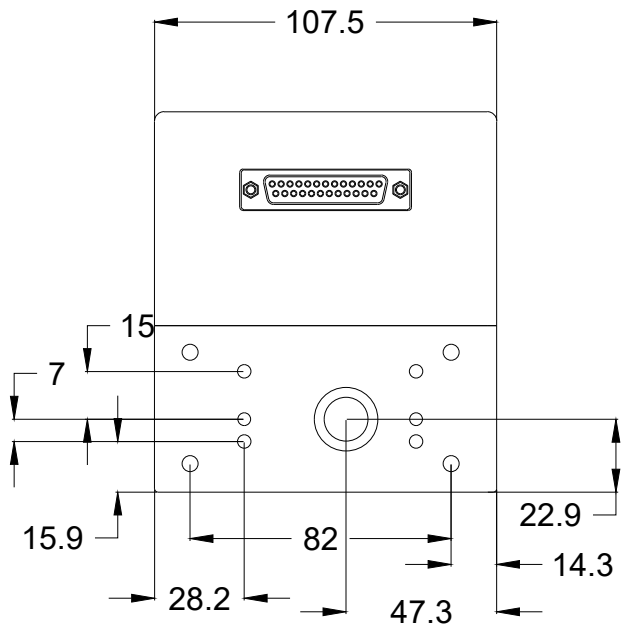
Long-term-drift per axis (8 h) (<)	40 μ rad
Cooling method	Passiv
Control interface	XY2-100
Humidity	80 % ^[3]
Supply voltage DC	15 V
Current consumption	5 A
Operation temperature	15 – 35 °C
Storage temperature	-35 – 60 °C
Mechanical dimensions (W x D x H)	107.5 x 156 x 119.5 mm
Net weight	3.1 kg

^[1] Other available wavelengths: 532 nm

^[2] f=160 / Hight 1 mm

^[3] Non condensing





2D scan head

PSH-14-A-RT

Dimensions are given in millimeters and are intended as reference values.
Binding information is available on request.

